

Oita City Walk Program



2022 revised edition
Furusato Oita Let's Go!

ふるさと大分

Let's

ゴー
郷!



With Local Guides
Oita City Walk Route



Oita: Japan's best hot Springs

hot spot



Full of flavors



Oita City Walk Route

You will surely fall in love with Oita even more, when you take a tour with a local guide.
Let's go to Oita, a nostalgic and heartwarming locality!

Pick up

Town Walk Course (Oita City)	①
Tour of Beppu's Historical Sites (Beppu City)	②
Nakatsu Castle Town North Course (Nakatsu City)	③
Mameda Town Walking Tour (Hita City)	④
Usuki City Guides (Nioza: Machihaccho) (Usuki City)	⑤
Recommended City Walk - A Light 60-minute Route (Kitsuki City)	⑥
Meander through the alleys of Takegawara at night (Beppu City)	⑦

[Oita City]

Tour of Otomo Funai's historical sites	⑧
Historical trail of Tsurusaki	⑨
An attractive town that exudes an air of history and culture.	⑩
Historic Walking Trail through the cobbled street of Imaichi on Higo Highway	⑪
The Saganoseki Ryoma saw	⑫

[Beppu City]

"Kumahachi Tour" explore the alleys of Takegawara at dusk of Takegawara at dusk	⑬
Explore the alleys of Takegawara area	⑭
Hamawaki Onsen / Nostalgic Tour	⑮
A romantic journey through Asamigo	⑯
Explore the town of Horita Onsen shrouded in steam	⑰
An evening tour of Kannawa Onsen	⑱
Take a leisurely stroll through a town with a lot of heart, Kamegawa.	⑲
Outstanding view! Uchinari Rice Terraces Experience and Walking Tour	⑳
Go on a historical romance trail of Kankaiji	㉑

[Nakatsu City]

Hachimenzan Peace Park Route	㉒
Ao-no-Domon, Yabakei Bridge, Rakanji Bridge Course	㉓
Yabakei Dam - Keiseki-en Garden - Shinyabakei Route	㉔
Okuyabakei Nature Walk Route	㉕

[Saiki City]

A historical and literary exploration tour	㉖
--	---

[Usuki City]

Tour of the national treasures, the Stone Buddhas of Usuki.	㉗
---	---

[Tsukumi City]

A walking tour of Hoto Island	㉘
-------------------------------	---

[Taketa City]

A path of discovering the castle town. (29)

[Bungo-Takada City]

Visit the dear old town of the Showa era (30)

Cultural exploration course of Rokugo-manzan (Mountain of Six Sanctuaries) (31)

[Usa City]

Explore the streets of temple town, Yokkaichi. (32)

[Bungo-Ono City]

Explore the port town of Donko river and Sankinkotai detail. (33)

See Kichijoji Temple and Shiroyama Shrine famous for Matsuo Kagura (34)

See the Stone Buddhas of Sugao and Rokujimyogo in a region steeped in the culture of stone carving. (35)

Experience life in the country at schoolhouse with a red roof. (36)

See a stone bridge, a waterwheel, and Harajiri Falls. (37)

Explore an ancient garden and the town of fine art (38)

[Yufu City]

A walking tour of Lake Kirin and Unagi Hime Shrine, the origin of Yufuin. (39)

Experience the mysterious beauty of Yufugawa Gorge and Hasama's history. (40)

[Kunisaki City]

Tour the spiritual power vortexes that bring good fortune (41)

[Himeshima Village]

Stroll through Himeshima Island with a chief Shinto priest (42)

[Hiji Town]

Take it slow – meander through the castle town by the sea – (43)

[Kokonoe Town]

Tadewara Wetlands Nature Observation Event (44)

Guided walk in mountains (45)

[Kusu Town]

Heritage of Industrial Modernization Bungo Mori Roundhouse Park Course (46)

A relaxing walking course in the government-designated scenic area (47)



Oita: Japan's best hot Springs
hot spot  Full of flavors

Map of Hot Spring Prefecture, Oita.



Town Walk Course

The course takes visitors on a casual stroll, enjoying a close look at the ruins of Funai Castle, the Yuho Park with its sculptures and monuments, and the Red Brick Building in the city center.



Course	①JR Oita Station (start/goal) → ②Red Brick Building→ ③Yuho Park (sculptures)→ ④Funai Castle Ruins→ ⑤Art Plaza→ ⑥Jungle Park→⑦ Nishi-Shinmachi Tenmansha Shrine	Book	Oita Funai Volunteer Guides Oita City Tourism Division, 2-31, Niagemachi, Oita, Oita Prefecture TEL: 097-537-7043 (Japanese only) FAX: 097-537-5670 e-mail: kanko2@city.oita.oita.jp Website: http://www.city.oita.oita.jp/o157/bunkasports/guide/1499403760687.html	
When?	As and when needed (Must be booked at least one week in advance)			
Times	Dep. 9:00AM - Arr. 3:00PM About 2 hours (depends on the course)			
Meet-up	Inside JR Oita Station In front of Oita City Tourism Information Center	Fee	Free	

The Ueno Historical Walk Course also takes you to historical sites associated with the Otomo family.

Tour of Beppu's Historical Sites

The Battle of Ishigakibaru fiercely fought between Kambei Kuroda and Yoshimune Ohtomo's army is regarded as "Kyushu's Battle of Sekigahara." See what remains of the dreams of the feudal powerful as you listen to the stories told by an expert local guide.

②Innobaba
(The site of Heidayu Tokieda's encampment)



The area in between Jissoji and Kakudono mountains used to be called Innobaba where Lord Buzen Usatokiada of the Kuroda clan had his encampment.

Mt Kakudono (Monument marking the site of an inn for Kuroda's officials)



There is a stone monument marking the site of the Kuroda Jyosui Inn within Daiichi Park on the south side of Mt Kakudono. Kuremonon Fukususa Inoue and Ichimon Nomura of the Kuroda army who went ahead of their troops took up their positions before the others arrived and sent the Ohtomo army flying.



①Mt Jisso-ji
(The site of Hosokawa's encampment)



The retainers of Tadaoki Hosokawa, who had defended Kitsuki Castle to his death, took up position midway up the south side of Mt Jissoji with Kuroda's army. Jissoji Temple used to be on the east side of the mountain, but it was razed to the ground in the war.

⑤Yoshihiro Shrine



The shrine is dedicated to Muneyuki Yoshihiro, and his tomb is in the rear of the property. He was hailed as a trusty general by the Kuroda army, and there are tombs of other retainers and a stone monument erected by the Hosokawa clan beside his grave.

Course	①Mt Jisso-ji (the site of Hosokawa's encampment) → ②Innobaba (the site of Heidayu Tokieda's encampment) → ③Inao Museum → ④The Old Buzen Highway → ⑤Yoshihiro Shrine	Book	Hirano Museum 11-7, Motomachi, Beppu, Oita Prefecture TEL・FAX: 0977-23-4748 (Japanese only) Website: http://www.hirano-museum.info/ ※ Guides are available in English, Chinese (Cantonese and Mandarin), and Korean by prior arrangement. ※ Additional fee applies
When?	3rd Saturday of the month (must be booked at least a week in advance)		
Times	Start 10:00AM, finish 12:00PM.		
Meet-up	Summit of Mt Jisso-ji	Fee	700 yen (with tea and snack)

Group tours can be arranged as required.

Nakatsu Castle Town North Course

The course takes you on a tour of the highlights of the castle town, Nakatsu. It includes typical sights such as Nakatsu Castle, the old residence of Yukichi Fukuzawa, and Tera-machi.

⑦ Nakatsu Castle



Yoshitaka (Kembel) Kuroda was ordered by Hideyoshi Toyotomi to control Kyushu and received 123,000 Goku to build the castle in 1588. It is one of Japan's three famous castles on a lake.

⑥ The old residence of Yukichi Fukuzawa

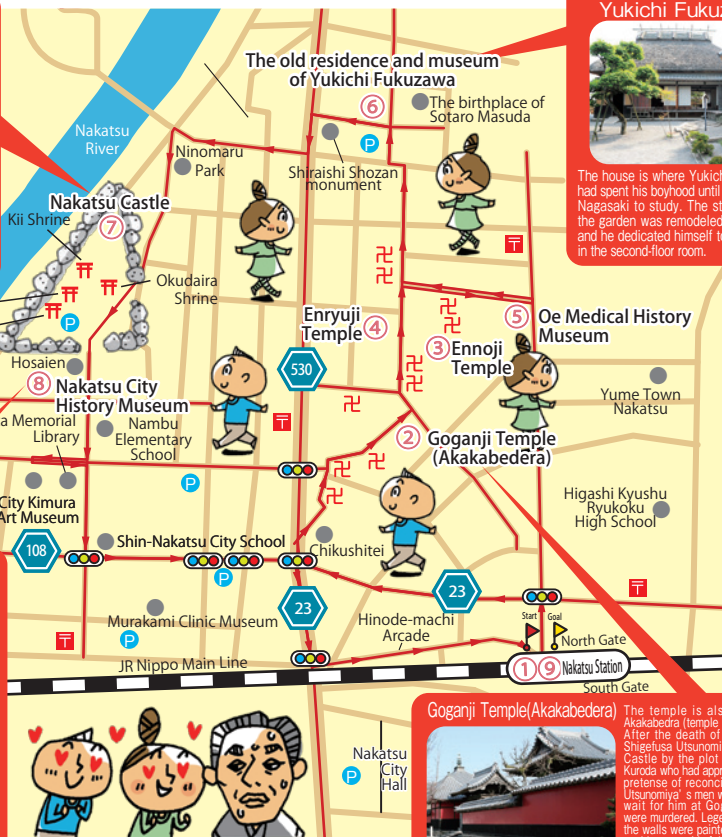


The house is where Yukichi Fukuzawa had spent his boyhood until he moved to Nagasaki to study. The storehouse in the garden was remodelled by Yukichi, and he dedicated himself to his studies in the second-floor room.

⑧ Nakatsu City History Museum



The stonewalls of Nakatsu Castle can be viewed through the picture window. In addition to the rotating exhibit rooms for which there is a fee, the museum has free admission areas, including a cafe, a stonewall theater, and a play studio for hands-on learning.



Goganji Temple (Akakabedera)



The temple is also known as Akakabedera (temple with red walls). After the death of the Lord Kii Shigelusa Utsunomiya in Nakatsu Castle by the plot of Yoshitaka Kuroda who had approached on the pretense of reconciliation, all of Utsunomiya's men who had lain in wait for him at Goganji Temple were murdered. Legend has it that the walls were painted red as they could not get rid of the blood stains no matter how many times they had applied paint to cover them.

Course	①Nakatsu Station North Gate → ②Goganji Temple → ③Ennoji Temple → ④Enryuji Temple → ⑤Oe Medical History Museum → ⑥The old residence and museum of Yukichi Fukuzawa → ⑦Nakatsu Castle → ⑧Nakatsu City History Museum →⑨Nakatsu Station North Gate	Book	Tourism Information Center, Nakatsu Yabakei Tourism Association. 219-2, Shimata, Nakatsu City, Oita Prefecture. (JR Nakatsu Station South Gate) TEL: 0979-23-4511 (Japanese only) FAX: 0979-64-6611 (Japanese only) E-mail: info@nakatsuyaba.com FAX and emails in English are available if you are willing to wait some time for a response. Book at least a week in advance by phone or from the website.
When?	All year (excluding end of year and New Year holidays) *Must be booked at least a week in advance		
Times	Morning course from 10:00AM, afternoon from 1:00PM		
Meet-up	JR Nakatsu Station South Gate Tourist Information Center 219-2, Shimata, Nakatsu City, Oita Prefecture.	Fee	[Tour guide fee] 3,000 yen per guide There is no admission to establishments included in the tour.

Mameda Town Walking Tour

Hita's local conductor will respectfully provide an introduction to Mameda-machi that retains the ambiance of the era when the region was under the direct control of the Edo shogunate.

③ Kuncho Shuzou (Brewery) Gallery



The sake storehouse built in the Edo period has a museum showcasing the sake-making method and a shop. The sake tasting corner is popular.

① Tenryo Hita Museum



The museum themed on the town culture of the period when the area was under the direct control of the Edo shogunate exhibits artifacts and documents from the era, including calligraphic works, paintings, and classic literature.



The head family of the Kusano family

The house itself is a listed Important Cultural Property, and the history and quantity of the Hina dolls will impress visitors. The house is open to the public during the Hina Festival, the Boys' Festival, Gion Festival, and Tenryo Festival.

Hirose Museum (currently closed)



The museum was the birthplace of Tanso Hirose, one of the three eminent persons of Bungo and purveyor to the shogunate, and the museum building was converted from the Hirose family's storehouse. Visitors can learn about the history of one of the most influential families in Hita, who operated a money-changing business.

The streets of Mameda were selected as a Preservation District for Groups of Historic Buildings in 2004, a valuable district that retains strong remnants of a town of ordinary folks and merchants of the late modern period.

② Nihon Gankan



The medicine shop opened in 1865 and is defined by the three-story timber construction. Curious items are on exhibit, including medicines and household goods.



Course	①Tenryo Hita Museum → ②Nihon Gankan-mae → ③Kuncho Shuzou (Brewery) Gallery-mae → ④Tenryo Hita Museum ※There will be no admission to the museums.	Book	Hita City Tourism Association 11-3, Moto-machi, Hita City, Oita Prefecture. TEL: 0973-22-2036 (Japanese only) FAX: 0973-22-2444 (Japanese only) Website: https://www.oidehita.com/ ※Make a booking at least three days in advance by contacting the Hita Tourism Association or book online at least three days in advance through Hita City Tourism Association's website. (oidehita.com)
When?	Throughout the year (except the end of the year/New Year holidays)		
Times	Morning course starting time: 10:00AM / Afternoon course starting time: 1:30PM Morning course finishing time: 11:00AM / Afternoon course finishing time: 2:30PM		
Meet-up	In front of the Tenryo Hita Museum 11-7, Mameda-machi, Hita City, Oita Prefecture.	Fee	1,400 yen (per person) ※Booking is accepted for a party of two or more.

We also have extended courses (90 mins/120 mins) that include admission to the museums.

Usuki City Guides
(Nioza: Machihaccho)

Visitors can explore the temples, samurai residences, and the labyrinthine castle town centered around Usuki Castle, and walk through the remarkable streets while reflecting on the history.

③ Yaeko Nogami Museum of Literature



Part of the birthplace of Yaeko Nogami, a female author from Usuki, is open to the public as a museum. About 200 of the author's personal effects, including handwritten letters and manuscripts, are on display.

Fundokin Shoyu Headquarters



Yasaka Shrine

Inaba Family Residence

Yaeko Nogami Museum of Literature

Kuge-no-Okura

Haccho Oji Street

Zenshoji Temple
Zenboji Temple

Korinji Temple

Gekkeiji Temple

Walking trail

Temples (several)

Nioza Historic Trail

Seigetsu-an

A sweeping view of the city!
Enjoy Buddhist cuisine.

Ryugenji Temple

Three-tiered Pagoda

Seigetsu-an

Seigetsu-an

Seigetsu-an

Seigetsu-an

Seigetsu-an

Seigetsu-an

Seigetsu-an

Seigetsu-an

Seigetsu-an

Seigetsu-an

Seigetsu-an

Seigetsu-an

Seigetsu-an

Seigetsu-an

Seigetsu-an

Seigetsu-an

Seigetsu-an

Seigetsu-an

Seigetsu-an

Seigetsu-an

Seigetsu-an

Seigetsu-an

Seigetsu-an

Seigetsu-an

Seigetsu-an

Seigetsu-an

Seigetsu-an

Seigetsu-an

Seigetsu-an

Usuki Castle Ruins

Famous for its cherry blossoms, the site hosts the Usuki Castle Ruins Cherry Blossom Festival in the spring.

① Kanko Koryu Plaza



The plaza is the first stop for visitors to Usuki. It offers panels and videos with information about Usuki and various pamphlets on sightseeing. It has a concierge on-site.

⑦ Nioza Historic Trail



Nioza retains a lot of the atmosphere of bygone days, including temples, samurai residences, houses with Japanese roof tiles, and whitewashed walls. Legend has it that Kasuga no Tsubone had once lived in Nioza.

Course	【Example】 ①Kanko Koryu Plaza → ②Inaba Family Residence → ③Yaeko Nogami Museum of Literature → ④Kuge-no-Okura → ⑤Ryugenji Temple Three-tiered Pagoda → ⑥Former Shinkoji Temple → ⑦Nioza Historic Trail → ⑧Temples → ⑨Haccho Oji Street → ①Kanko Koryu Plaza	Book Usuki Machinami Guide Society TEL: 0972-63-7898 (Japanese only) Usuki Town Tourism Kenkyukai TEL: 090-7380-4337 (representative) ※Japanese only
When?	As per customer request.	
Times	As per customer request.	
Meet-up	To be discussed with the customer.	
Fee	2,000 yen per guide.	

Recommended City Walk – A Light 60-minute Route

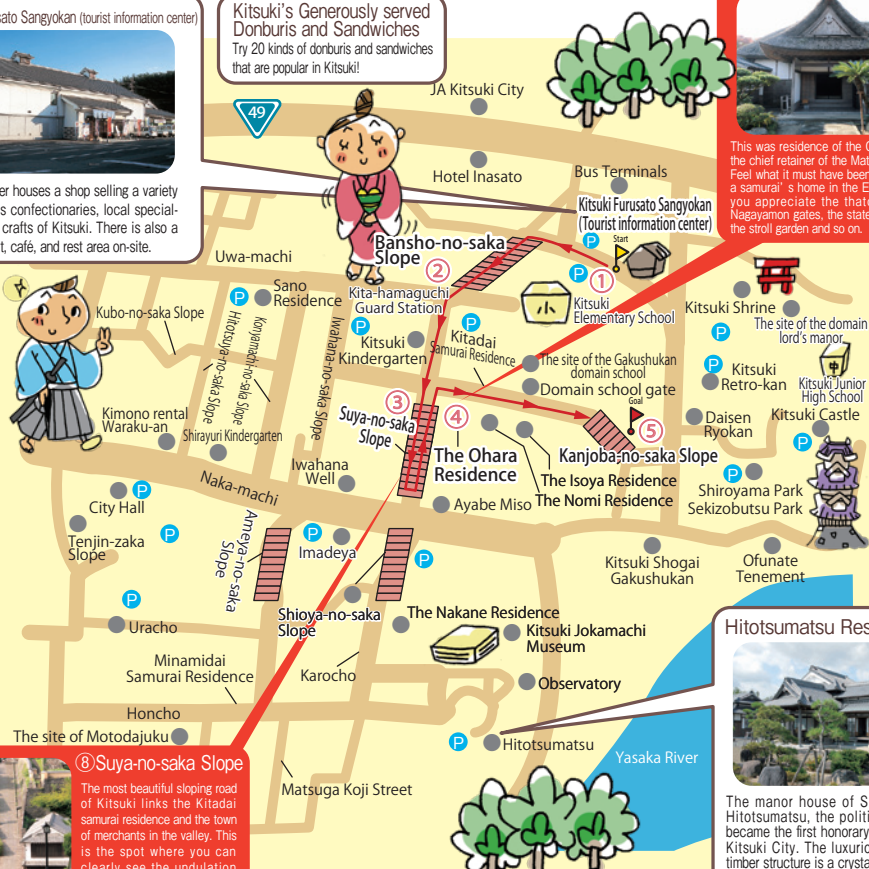
The route takes you on an easy stroll through the streets of Japan's only "sandwich-shaped castle town," which still retains a strong Edo ambiance.

Kitsuki Furusato Sangyokan (tourist information center)



The center houses a shop selling a variety of famous confectionaries, local specialties, and crafts of Kitsuki. There is also a restaurant, café, and rest area on-site.

Kitsuki's Generously served Donburis and Sandwiches
Try 20 kinds of donburis and sandwiches that are popular in Kitsuki!



⑨The Ohara Residence



This was residence of the Ohara family, the chief retainers of the Matsudaira clan. Feel what it must have been like to be in a samurai's home in the Edo period as you appreciate the thatched roofs, Nagayamon gates, the stately threshold, the stroll garden and so on.

⑧Suya-no-saka Slope



The most beautiful sloping road of Kitsuki links the Kitadai samurai residence and the town of merchants in the valley. This is the spot where you can clearly see the undulation which gave birth to the moniker, "The sandwich-shaped castle town."

Hitotsumatsu Residence



The manor house of Sadayoshi Hitotsumatsu, the politician who became the first honorary citizen of Kitsuki City. The luxuriously built timber structure is a crystallization of the lavishness and skill of bygone days, and it affords the best views of Kitsuki Castle and Morie Bay.

Course	①Kitsuki Furusato Sangyokan(Tourist information center) → ②Bancho-no-saka Slope → ③Suya-no-saka Slope → ④The Ohara Residence → ⑤Kanjoba-no-saka Slope	Book Kitsuki Volunteer Guides Society 665-172, Kitsuki, Kitsuki City, Oita Prefecture. TEL: 0978-63-0100 FAX: 0978-63-0112 Website https://www.kit-suki.com/ Not available during the year end and New Year holidays.
When?	Daily	
Times	①Start 10:00AM Finish 11:00AM / ②Start 2:00PM Finish 3:00PM	
Meet-up	Kitsuki Furusato Sangyokan (Kitsuki Tourist Information Center)	
Fee	1,300 yen	

Meander through the alleys of Takegawara at night

See the neon-lit streets of Beppu while listening to the guitars played by third-generation buskers Hacchan and Bunchan.

Umezono Onsen
The hot spring spa in the city is a well-kept secret. Built in 1872, it was called Shintakegaware Onsen in the olden days.

The winding street is less than 3 meters wide. There are many hidden gems there.

① Takegawara Onsen
The spa was built in 1879, but the present building dates back to 1938. It got the name Takegawara (bamboo roofed) Onsen for it initially had a roof laid with bamboo.

Takegawara Koji Street
It is Japan's oldest timber arcade. The street is lined with retro-inspired cafés, massage parlors, bars, taverns, and sweet shops.

Hirano Museum
11-7, Moto-machi, Beppu City, Oita Prefecture.
TEL/FAX: 0977-23-4748 (Japanese only)
<http://www.hirano-museum.info/>
※ Guides are available in English, Chinese (Cantonese and Mandarin), and Korean by prior arrangement. ※ Additional fee applies

Course
① Takegawara Onsen → ② Umezono Street → ③ Shinmiya Street → ④ Yasaka Renga Street → ⑤ Kitahama Street → ⑥ Hirano Museum (the tour includes Haiku-style commentaries.)

When?
2nd & 4th Friday of the month (must be booked at least a week on advance)

Times
Start 8:30PM, finish 9:45PM.

Meet-up
Municipal Takegawara Onsen Motomachi, Beppu City

Fee
1,000 yen (with a complimentary illustrated postcard)

Group tours can be arranged (for 10 or more people)

Guides

Volunteer Guides
Otomoshi Yugakukai

Tour of Otomo Funai's historical sites

The walking trail takes you on a tour of the historical sites associated with the Otomo family while unraveling the history of the Otomos that enjoyed the height of glory for nearly 400 years.

Statue of Lord Sorin Otomo
Lord Otomo was one of the military commanders of the Sengoku period who governed Funai. He is also famously known as the Christian Daimyo.

③Manju-ji Temple
The main temple main hall, priests' kitchen and living quarters, the Buddha hall, Zen meditation hall, sutra repository, and a temple dedicated to Kannon stand in a line on the expansive temple grounds.

④The site of Deus Cathedral
Otomo Sorin welcomed Francisco Xavier to Funai and permitted him to preach Christianity and build churches. The Deus Chapel (Funai Church) became the base for missionary work in Funai.

The site of Otomo manor (Uenoharu Yakata)
There were two Otomo family manors in Funai, one in Kentoku-machi, and the other in Ueno. The one in Ueno was called "Uenoharu Yakata," and it was built in a place that possessed a commanding view of the town of Funai.

①Namban BVNGO Koryukan
The museum showcases relics associated with the Otomo clan and the atmosphere of Namban culture promoted by Otomo Sorin. You can experience what it was like in those days through the large screen images and enjoy the site of the just-restored Otomo manor gardens.

Course	①Namban BVNGO Koryukan(Start・Goal) → ②Manju-ji Temple → ③Daichi-ji Temple → ④The site of Deus Cathedral → ⑤Wakamiya Hachiman Shrine → ① Namban BVNGO Koryukan	Book	Volunteer Guides Otomoshi Yugakukai Ninomiya, Chairman. Mobile: 090-4580-1594 (Japanese only)
When?	As and when needed(Book at least a week in advance: call and then send a letter)		
Times	Start 9:00AM, finish 3:00PM About 2 hours (depends on the course)		
Meet-up	Namban BVNGO Koryukan	Fee	200 yen per person (inclusive of accident insurance) Free admission for elementary and junior high school children.

There is also a course called "Town Walk" which takes you on a tour of the site of Funai Castle and the sculptures in Yuho Park.

The course takes you through the historical sites of Tsurusaki which flourished as the enclave of Lord Kiyomasa of the Higo Domain, as you learn about the history and culture of the area.

Tsurusaki district
Tsurusaki was an important enclave of the Higo Domain (Kumamoto) and the sea gateway of Sankinkotai detail.

②Hoshinji Temple
The temple was built by Lord Kiyomasa Kato of the Higo Domain. The main temple houses the wooden tablets of the successive heads of the Kato clan, and the treasure house contains relics associated with Lord Kiyomasa.

⑤The site of the pier used for the Sankinkotai detail
The place was used by the Lord of the Higo Domain as the pier for his Sankinkotai detail. It is now Shinbon Park, but there is a stone monument marking the location of the dock.

Tsurusaki Daijingu Shrine
The park hosts the splendid and elegant Homba Tsurusaki Dance Festival in August!

Tsurusaki Park
The park hosts the splendid and elegant Homba Tsurusaki Dance Festival in August!

⑦The site of the construction office, Yushukan.

⑧Izumi Shrine

⑨Ken hachimangu Shrine

⑩Jingo-ji Temple

③Ken hachimangu Shrine
The shrine was built after the discovery of the sacred sword of Usa Shrine, which had been missing for centuries.

①Mori Kuso Memorial Museum
Kuso Mori, the Emperor's teacher during the end of the Shogunate, opened Chirakan, a school in his residence, Tenshodo, in Tsurusaki district. The museum showcases historical artifacts, documents, and relics.

Statues and lodging place of Kaishu Katsu and Ryoma Sakamoto

Start **Goal**

Otozu River

Oita City

大御代は ゆたかなりけり旅旅
一夜の夢を 千代の鶴さき
文久四年鶴崎にて 勝 海舟

Course	①Mori Kuso Memorial Museum → ②Hoshinji Temple (built by Lord Kiyomasa) → ③ Statues and lodging place of Kaishu Katsu and Ryoma Sakamoto → ④The site of the Bungo-Tsurusaki teahouse → ⑤The site of the pier used for the Sankinkotai detail → ⑥Tsurusaki Daijingu Shrine → ⑦The site of the construction office, Yushukan → ⑧ Izumi Shrine → ⑨Ken hachimangu Shrine → ⑩Jingo-ji Temple → Part ways	Tsurusaki Volunteer Guides Club Kuso Mori Museum, 381-1, Tsurusaki, Oita City, Oita Prefecture. TEL: 097-521-4893 (Japanese only) FAX: 097-521-4893 Website: http://www.city.oita.oita.jp/o157/bunkasports/guide/1499403760687.html
When?	As and when needed (Must be booked at least one week in advance)	
Times	9:30AM — 2:30PM The tour lasts 90 to 120 minutes	
Meet-up	Kuso Mori Museum 381-1, Tsurusaki, Oita City.	
Fee	Free (bookings for the folk entertainment are taken separately)	

Folk entertainment such as Tsurusaki Dance and Watari Byoshi are subject to availability.

An attractive town that exudes an air of history and culture.

With a focus on Hoashi Honke Sake Brewery, you will tour the historic streets that prospered from the late Edo period to before World War II.

The streets of Hetsugi



The town was considered a key junction of traffic along Ohno River on Hyuga Highway. It retains the historical ambience of the Edo era.

③Hoashi Honke Sake Brewery



The brewery was built from the mid-Edo to Meiji period, and it produced sake until 1972. It is now Oita City's designated tangible cultural property which provides a clear view of the process of sake-making.



Dainan Machizukuri Center



The manor house of the former lord of the Kumamoto Domain in Tsurusaki was relocated in 1906 and used as a kimono shop. After a partial conversion, it was used as the local post office from 1932 to 1970.

Former 23rd National Bank's branch office

To Inukai



Gobaen

Hoashi Honke Sake Brewery

Minori Nursery School

JA

To Oita City

Tenshindo Hetsugi Hospital

Nishi Hiroba

Fujimiro

Dainan Rojin Ikoi-no-le

Fureai Hiroba

Sanreito (silkworm memorial)

Dainan Civic Hall

Hetsugi Junior High School

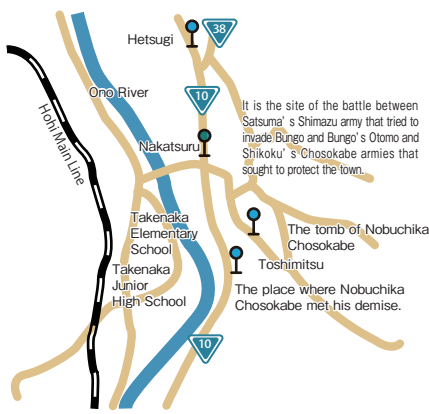
Anzu-no-kai Office (Café Anju)

Myosho-ji Temple

The old kimono shop, Manta, Dainan Machizukuri Center

Shoseki Furokan Senshokaku

Gobaen



Hetsugi

Ono River

Nakatsuru

Takenaka Elementary School

Takenaka Junior High School

The tomb of Nobuchika Chosokabe

Toshimitsu

The place where Nobuchika Chosokabe met his demise.

It is the site of the battle between Satsuma's Shimazu army that tried to invade Bungo and Bungo's Otomo and Shikoku's Chosokabe armies that sought to protect the town.

The three-story timber structure was built in 1869.

Start

Goal

Sanreito (silkworm memorial)

Dainan Civic Hall

Hetsugi Junior High School

Anzu-no-kai Office (Café Anju)

Myosho-ji Temple

The old kimono shop, Manta, Dainan Machizukuri Center

Shoseki Furokan Senshokaku

Gobaen

Hoashi Honke Sake Brewery

Minori Nursery School

JA

To Oita City

Tenshindo Hetsugi Hospital

Nishi Hiroba

Fujimiro

Dainan Rojin Ikoi-no-le

Fureai Hiroba

Sanreito (silkworm memorial)

Dainan Civic Hall

Hetsugi Junior High School

Anzu-no-kai Office (Café Anju)

Myosho-ji Temple

The old kimono shop, Manta, Dainan Machizukuri Center

Shoseki Furokan Senshokaku

Gobaen

Hoashi Honke Sake Brewery

Minori Nursery School

JA

To Oita City

Tenshindo Hetsugi Hospital

Nishi Hiroba

Fujimiro

Dainan Rojin Ikoi-no-le

Fureai Hiroba

Sanreito (silkworm memorial)

Dainan Civic Hall

Hetsugi Junior High School

Anzu-no-kai Office (Café Anju)

Myosho-ji Temple

The old kimono shop, Manta, Dainan Machizukuri Center

Shoseki Furokan Senshokaku

Gobaen

Hoashi Honke Sake Brewery

Minori Nursery School

JA

To Oita City

Tenshindo Hetsugi Hospital

Nishi Hiroba

Fujimiro

Dainan Rojin Ikoi-no-le

Fureai Hiroba

Sanreito (silkworm memorial)

Dainan Civic Hall

Hetsugi Junior High School

Anzu-no-kai Office (Café Anju)

Myosho-ji Temple

The old kimono shop, Manta, Dainan Machizukuri Center

Shoseki Furokan Senshokaku

Gobaen

Hoashi Honke Sake Brewery

Minori Nursery School

JA

To Oita City

Tenshindo Hetsugi Hospital

Nishi Hiroba

Fujimiro

Dainan Rojin Ikoi-no-le

Fureai Hiroba

Sanreito (silkworm memorial)

Dainan Civic Hall

Hetsugi Junior High School

Anzu-no-kai Office (Café Anju)

Myosho-ji Temple

The old kimono shop, Manta, Dainan Machizukuri Center

Shoseki Furokan Senshokaku

Gobaen

Hoashi Honke Sake Brewery

Minori Nursery School

JA

To Oita City

Tenshindo Hetsugi Hospital

Nishi Hiroba

Fujimiro

Dainan Rojin Ikoi-no-le

Fureai Hiroba

Sanreito (silkworm memorial)

Dainan Civic Hall

Hetsugi Junior High School

Anzu-no-kai Office (Café Anju)

Myosho-ji Temple

The old kimono shop, Manta, Dainan Machizukuri Center

Shoseki Furokan Senshokaku

Gobaen

Hoashi Honke Sake Brewery

Minori Nursery School

JA

To Oita City

Tenshindo Hetsugi Hospital

Nishi Hiroba

Fujimiro

Dainan Rojin Ikoi-no-le

Fureai Hiroba

Sanreito (silkworm memorial)

Dainan Civic Hall

Hetsugi Junior High School

Anzu-no-kai Office (Café Anju)

Myosho-ji Temple

The old kimono shop, Manta, Dainan Machizukuri Center

Shoseki Furokan Senshokaku

Gobaen

Hoashi Honke Sake Brewery

Minori Nursery School

JA

To Oita City

Tenshindo Hetsugi Hospital

Nishi Hiroba

Fujimiro

Dainan Rojin Ikoi-no-le

Fureai Hiroba

Sanreito (silkworm memorial)

Dainan Civic Hall

Hetsugi Junior High School

Anzu-no-kai Office (Café Anju)

Myosho-ji Temple

The old kimono shop, Manta, Dainan Machizukuri Center

Shoseki Furokan Senshokaku

Gobaen

Hoashi Honke Sake Brewery

Minori Nursery School

JA

To Oita City

Tenshindo Hetsugi Hospital

Nishi Hiroba

Fujimiro

Dainan Rojin Ikoi-no-le

Fureai Hiroba

Sanreito (silkworm memorial)

Dainan Civic Hall

Hetsugi Junior High School

Anzu-no-kai Office (Café Anju)

Myosho-ji Temple

The old kimono shop, Manta, Dainan Machizukuri Center

Shoseki Furokan Senshokaku

Gobaen

Hoashi Honke Sake Brewery

Minori Nursery School

JA

To Oita City

Tenshindo Hetsugi Hospital

Nishi Hiroba

Fujimiro

Dainan Rojin Ikoi-no-le

Fureai Hiroba

Sanreito (silkworm memorial)

Dainan Civic Hall

Hetsugi Junior High School

Anzu-no-kai Office (Café Anju)

Myosho-ji Temple

The old kimono shop, Manta, Dainan Machizukuri Center

Shoseki Furokan Senshokaku

Gobaen

Hoashi Honke Sake Brewery

Minori Nursery School

JA

To Oita City

Tenshindo Hetsugi Hospital

Nishi Hiroba

Fujimiro

Dainan Rojin Ikoi-no-le

Fureai Hiroba

Sanreito (silkworm memorial)

Dainan Civic Hall

Hetsugi Junior High School

Anzu-no-kai Office (Café Anju)

Myosho-ji Temple

The old kimono shop, Manta, Dainan Machizukuri Center

Shoseki Furokan Senshokaku

Gobaen

Hoashi Honke Sake Brewery

Minori Nursery School

JA

To Oita City

Tenshindo Hetsugi Hospital

Nishi Hiroba

Fujimiro

Dainan Rojin Ikoi-no-le

Fureai Hiroba

Sanreito (silkworm memorial)

Dainan Civic Hall

Hetsugi Junior High School

Anzu-no-kai Office (Café Anju)

Myosho-ji Temple

The old kimono shop, Manta, Dainan Machizukuri Center

Shoseki Furokan Senshokaku

Gobaen

Hoashi Honke Sake Brewery

Minori Nursery School

JA

To Oita City

Tenshindo Hetsugi Hospital

Nishi Hiroba

Fujimiro

Dainan Rojin Ikoi-no-le

Fureai Hiroba

Sanreito (silkworm memorial)

Dainan Civic Hall

Hetsugi Junior High School

Anzu-no-kai Office (Café Anju)

Myosho-ji Temple

The old kimono shop, Manta, Dainan Machizukuri Center

Shoseki Furokan Senshokaku

Gobaen

Hoashi Honke Sake Brewery

Minori Nursery School

JA

To Oita City

Tenshindo Hetsugi Hospital

Nishi Hiroba

Fujimiro

Dainan Rojin Ikoi-no-le

Fureai Hiroba

Historic Walking Trail through the cobbled street of Imaichi on Higo Highway

Imaichi was a post town of the Oka Domain, and the Higo Domain also used the cobbled street on their journey to perform their Sankinkotai detail (where feudal lords were required to spend alternate years residing in Edo.) Let's stroll through the historical highway, imagining what things were like back in the day.

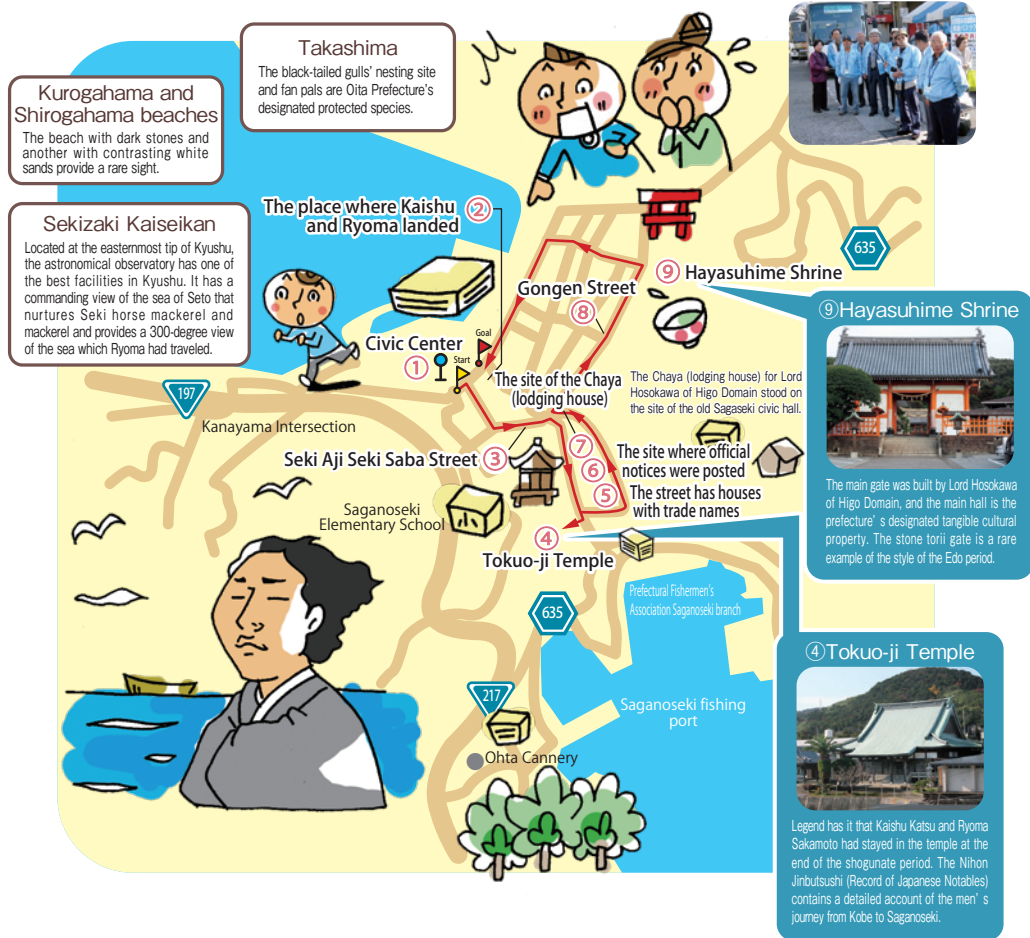


Course	①Maruyama Shrine (Romon Gate) → ② Imaichi Stone Pavement (30-60min course) The tour can be catered to the customer and can also include Notsuharujuku, the Magaibutsu of Ota, Sankyo monument, and Nanase Dam.	Book	Notsuharu Volunteer Guides Council Notsuharu Branch Office, 800, Notsuharu, Oita City, Oita Prefecture. TEL: 097-588-1111 (Japanese only) FAX: 097-588-1613 (Japanese only)
When?	As and when needed (Must be booked at least two weeks in advance)		
Times	9:00AM-3:00PM		
Meet-up	In front of the torii gate of Maruyama Shrine Further along 2563-1, Imaichi, Oita City.	Fee	Free

The weeping cherry blossoms are in full blooms from mid-March to early April along the cobbled street of Imaichi.

The Saganoseki Ryoma saw

Explore the historical streets while learning about the time Kaishu Katsu and Ryoma Sakamoto visited Saganoseki in 1864.



Course	①Civic Center → ②The place where Kaishu and Ryoma landed → ③Seki Aji Seki Saba Street → ④Tokuo-ji Temple → ⑤The street has houses with trade names → ⑥The site where official notices were posted → ⑦The site of the Chaya (lodging house) → ⑧Gongen Street → ⑨Hayasuhome Shrine → ⑩Civic Center	Book	Saganoseki Volunteer Guides Association NPO Saganoseki Machizukuri Council TEL: 097—575—2000 (Japanese only) FAX: 097—574—7261 (Japanese only) Website: http://www.city.oita.oita.jp/o157/bunkasports/guide/1499403760687.html
When?	As and when needed (Must be booked at least one week in advance)		
Times	9:00AM-3:00PM, 1-1.5 hours (Depending on the course)		
Meet-up	Saganoseki Civic Center parking area 1407-27, Saganoseki, Oita City.	Fee	300 yen (contribution)

"Kumahachi Tour" explore the alleys of Takegawara at dusk

You will be taken on a fun guided tour of the sites associated with Aburaya Kumahachi, known as the father of Beppu tourism, by a guide impersonating the man himself or a guide who is a look-alike of Japan's first female bus guide.

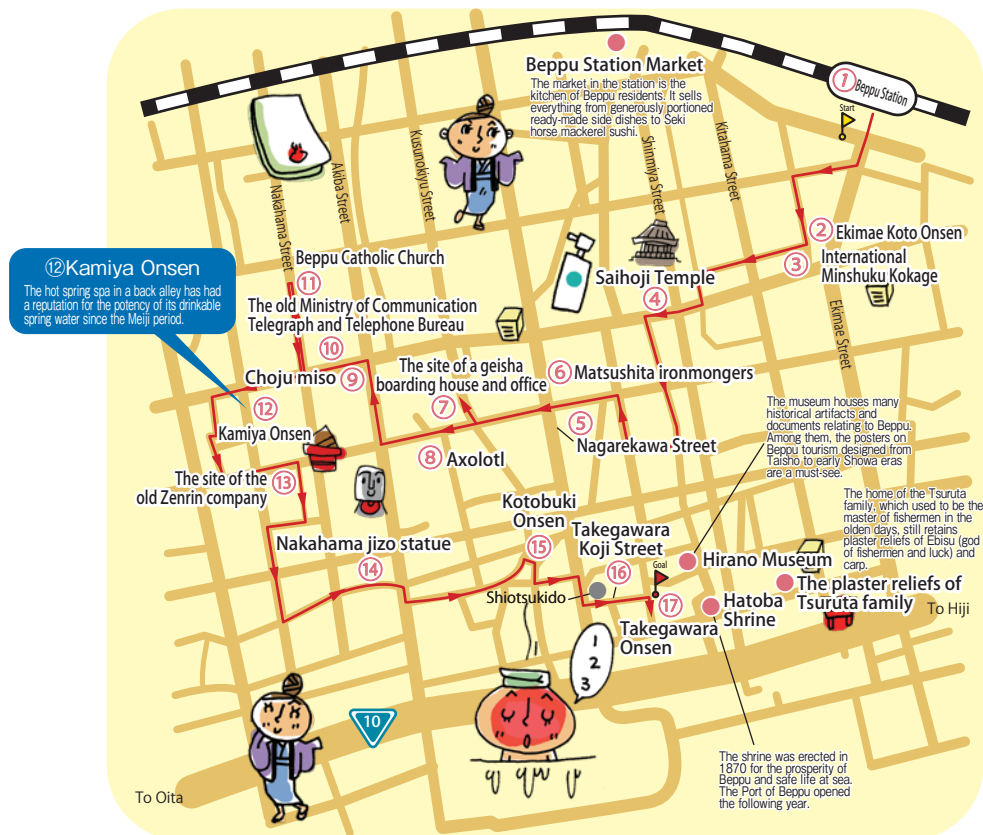


Course	①The statue of Aburaya Kumahachi → ②Beppu Station Market → ③Kamenoi Hotel → ④Furosen hot springs → ⑤The survey site of Tadataka Ino → ⑥Takegawara Onsen → ⑦Hirano Museum (watch a DVD about Kumahachi)	Book	Hirano Museum 11-7, Moto-machi, Beppu City, Oita Prefecture. TEL/FAX: 0977-23-4748 (Japanese only) http://www.hirano-museum.info/ ※ Guides are available in English, Chinese (Cantonese and Mandarin), and Korean by prior arrangement. ※ Additional fee applies
When?	Every day (Must book at least a week in advance for two or more people.)		
Times	Start 4:00PM, finish 5:00PM.		
Meet-up	In front of the Aburaya Kumahachi statue, JR Beppu Station. Ekimae-cho, Beppu City.		
Fee	700 yen (includes Abuhachi rice crackers and Kumahachi pamphlet)		

Group tours (10 or more in a group) can also be arranged by request.

Explore the alleys of Takegawara area

Why not meander through the back alleys that retain the look of the good old days of the hot spring town, Beppu? The tour will visit many public baths and old establishments cherished by the locals. You will find the undiscovered charms of Beppu Onsen.



Course	①Beppu Station → ②Ekimae Koto Onsen → ③International Minshuku Kokage → ④Saihoji Temple → ⑤Nagarekawa Street → ⑥Matsushita ironmongers → ⑦The site of a geisha boarding house and office → ⑧Axolotl (site of an old rental house for gatherings) → ⑨ Choji miso → ⑩The old Ministry of Communication Telegraph and Telephone Bureau → ⑪Beppu Catholic Church → ⑫Kamiya Onsen → ⑬The site of the old Zenrin company → ⑭Nakahama jizo statue → ⑮Kotokubi Onsen → ⑯Takegawara Koji Street → ⑰Takegawara Onsen ※This course is an example for reference.	Book	Beppu City Tourism Association. 1-15, Kaminoguchi-cho, Beppu City, Oita Prefecture. TEL: 0977-24-2828 (Japanese only) FAX: 0977-24-5959 (Japanese only) ※Guides are available in English, Chinese (Cantonese and Mandarin), and Korean by prior arrangement. ※Additional fee applies
When?	Every Mon, Wed, Fri, Sat, and 3rd and 5th Sundays.(Must book at least 3 days in advance)		
Times	Start 10:00AM, finish 12:30PM.		
Meet-up	In front of the Tourism Association Information Center inside Beppu Station.12. Ekimae-cho, Beppu City.	Fee	Adults 1,000 yen / elementary school children 500 yen / free for preschool children (Complimentary snack)

A group of 10 or more must book. There are no tours during the end of the year and New Year holidays, and from July 25 to August 15.

Hamawaki Onsen / Nostalgic Tour

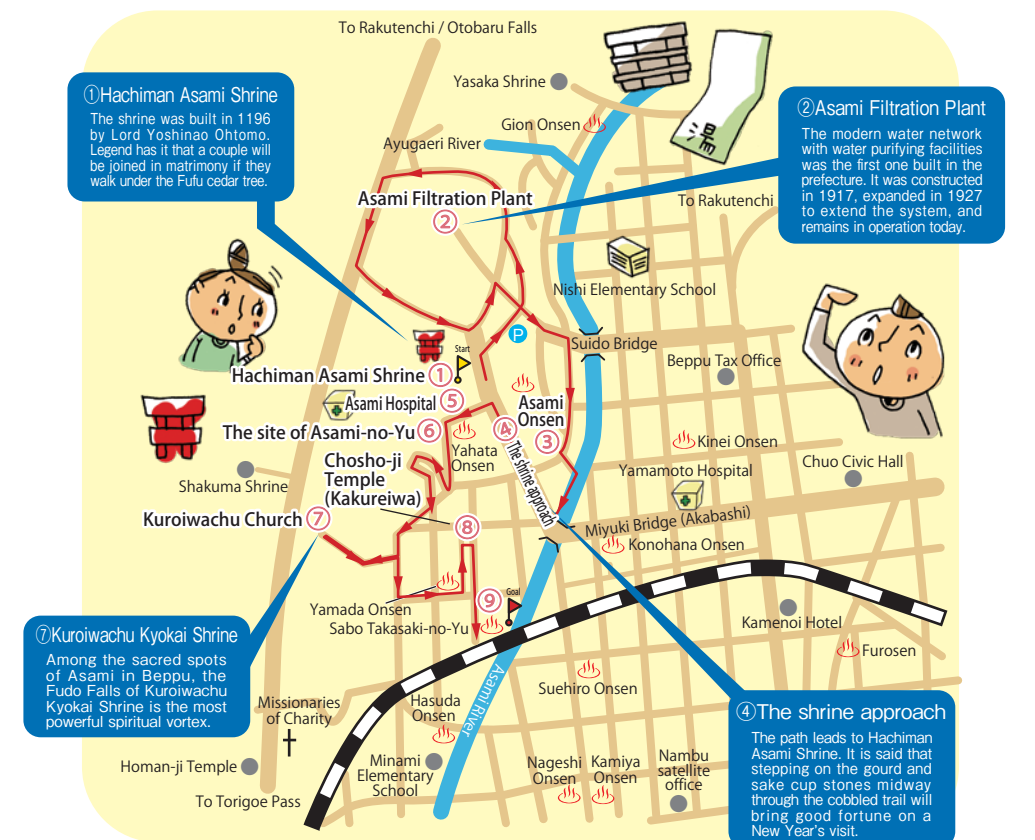
Visit the scenic town that has flourished since the olden days as a hot spring resort which retains the faded ambiance of Meiji, Taisho, and early Showa.



Course	①Higashi-Beppu Station → ②Yutopia Hamawaki → ③Chokaku-ji Temple → ④Sofuku-ji Temple → ⑤Homan-ji Temple → ⑥Nishimachi → ⑦Hirao manor → ①Higashi-Beppu Station	Book	Hamawaki Club (Beppu Tsuge Kogei) 10-2, Matsubara-cho, Beppu City, Oita Prefecture. TEL/FAX: 0977-23-3841 (Japanese only) ※ Guides are available in English, Chinese (Cantonese and Mandarin), and Korean by prior arrangement. ※ Additional fee applies
When?	Every Sunday		
Times	Start 10:00AM, finish 12:00PM.		
Meet-up	JR Higashi-Beppu Station 1-4-3, Hamawaki, Beppu City.		
		Fee	300 yen

A romantic journey through Asamigo

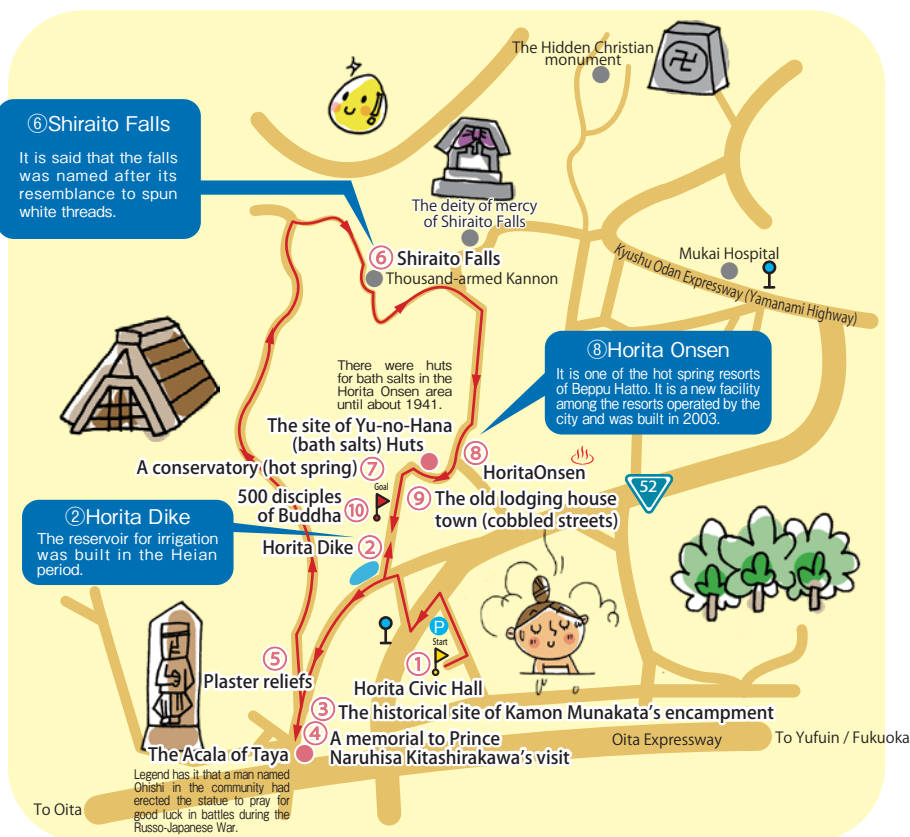
The origins of Beppu, history, famous water, and views. The Beppu City area was called Asamigo in the olden days. There is tranquility in the air and time flows quietly in the Asami region that has retained the prestigious place name.



Course	①Hachiman Asami Shrine → ②Asami Filtration Plant → ③Asami Onsen → ④The shrine approach → ⑤Asami Hospital → ⑥The site of Asami-no-Yu → ⑦Kuroiwachu Church → ⑧Choshō-ji Temple → ⑨Part ways after tea and snack.	Book Asami Chiiki Shinkokai 1-2-11, Asami, Beppu City, Oita Prefecture. (Inside Sabo Takasaki) TEL/FAX: 0977-23-0592 (Japanese only) Website: https://asamiwalk.exblog.jp/ ※ Guides are available in English, Chinese (Cantonese and Mandarin), and Korean by prior arrangement. ※ Additional fee applies
When?	3rd Sunday of the month, and when requested for a group of 5 or more people.	
Times	Start 10:00AM (please arrive by 9:45AM) Finish 12:00PM (The tour is approximately 2 hours.)	
Meet-up	In front of the main hall of Hachiman Asami Shrine. 2-15-19, Asami, Beppu City.	
Fee	700 yen, children 400 yen, including tea and snack. ※ Please book as tea and snack must be arranged.	

Explore the town of Horita
Onsen shrouded in steam

Horita Onsen resort opened in the Edo period to offer hot spring cures, and the area was a key junction of traffic that led to Yufuin, Hita, and Dazaifu. Let's explore the town shrouded in steam while imagining how it prospered from the Edo period to early Showa as you walk on the original cobbled stone streets.



Course	①Horita Civic Hall → ②Horita Dike → ③The historical site of Kamon Munakata's encampment → ④A memorial to Prince Naruhisa Kitashirakawa's visit → ⑤Plaster reliefs → ⑥Shiraito Falls → ⑦A Conservatory (hot spring) → ⑧Horita Onsen → ⑨The old lodging house town (cobbled streets) → ⑩500 disciples of Buddha	Beppu Hatto Horita Onsengo Club 3-kumi, Beppu Horita, Oita Prefecture. TEL:090-2502-8055 (Shuto) ※Japanese only ※Guides are available in English, Chinese (Cantonese and Mandarin), and Korean by prior arrangement. ※Additional fee applies
When?	2nd Sunday of the month(Must book at least a week in advance)	
Times	Start 10:00AM, finish 12:00PM (including breaks)	
Meet-up	Horita Civic Hall 1-kumi, Horita, Beppu City.	
	Fee	700 yen (including tea and snack)

※There is also a special course for hardy walkers.

Guides

NPO Kannawa Yukemuri Club

An evening tour of Kannawa Onsen

We want visitors to see life in Kannawa, where Onsen culture is in the air, while walking on Oita's longest cobbled street, and feel soothed by the town that is likened to a place where time stands still.

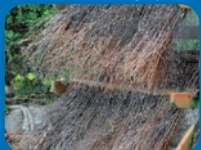
Jigoku Mushi Cuisine



In the mid-Edo period, people used the steam rising from the ground to cook. That is still the case in Kannawa today. The steam cooks vegetables and seafood perfectly.



②Bamboo cooling system



It used to take 10 hours to cool the nearly 100-degree C hot spring water from the source, but the system requires only a few minutes to reduce the temperature to 46-47 degrees C. The system is made of bamboo that is indigenous to the prefecture.

③Kannawa Ginza

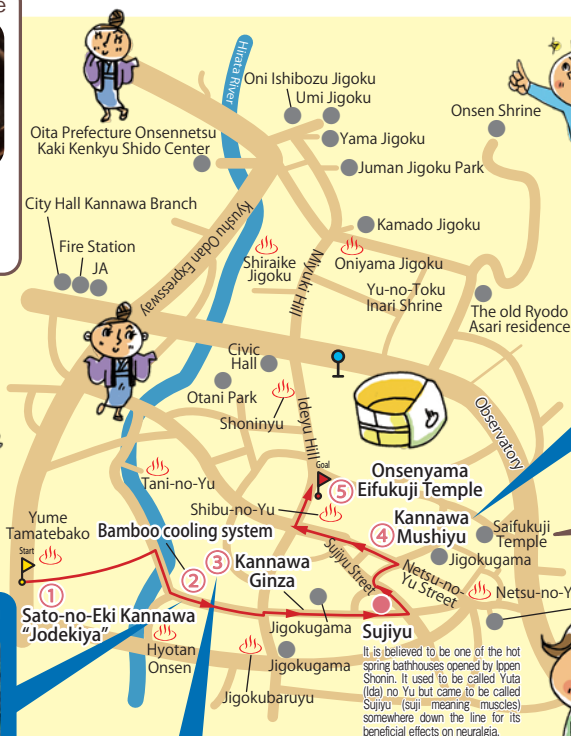
The street is lined with old shops that sell clothing and food (fish and vegetables) for hot spring tourists. It retains the atmosphere of early Showa.

④Kannawa Mushiyu



The way the bathhouse looks has not changed that much since it was built by Ippen Shonin. The medicinal properties of Japanese rush laid on the floor will refresh the body through the steam.

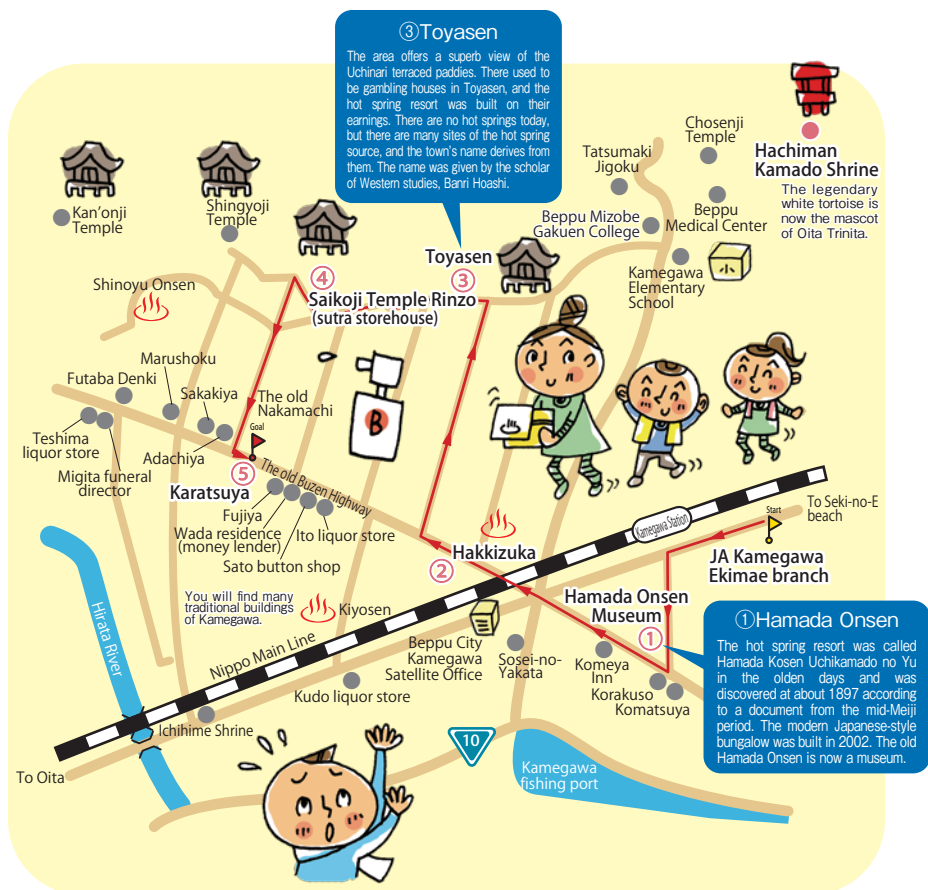
It provides the panorama of the streets of Kannawa and the steam.



Course	①Sato-no-Eki kannawa "Jodekiya" → ②Bamboo cooling system → ③Kannawa Ginza → ④Kannawa Mushiyu (steam bath) → ⑤Onsenyama Eifukuji Temple	Book	Kanawa Yukemuri club TEL: 0977-66-0527 (Kono) ※Japanese only ※Guides are available in English, Chinese (Cantonese and Mandarin), and Korean by prior arrangement. ※Additional fee applies
When?	Every Saturday and Sunday (Must book at least a day in advance)		
Times	Start 4:00PM		
Meet-up	Sato-no-Eki Kannawa Jodekiya at the entrance of Hotel Fugetsu Hammond. 1-Kumi, Kannawa Kitaju, Beppu City.	Fee	500 yen (Complimentary snack)

Take a leisurely stroll through a town with a lot of heart, Kamegawa.

The area of Kamegawa which used to be directly governed by the Shogunate has an abundance of flowing hot springs and is visited by Onsen connoisseurs across Japan. Why not explore the area where historical buildings survive?

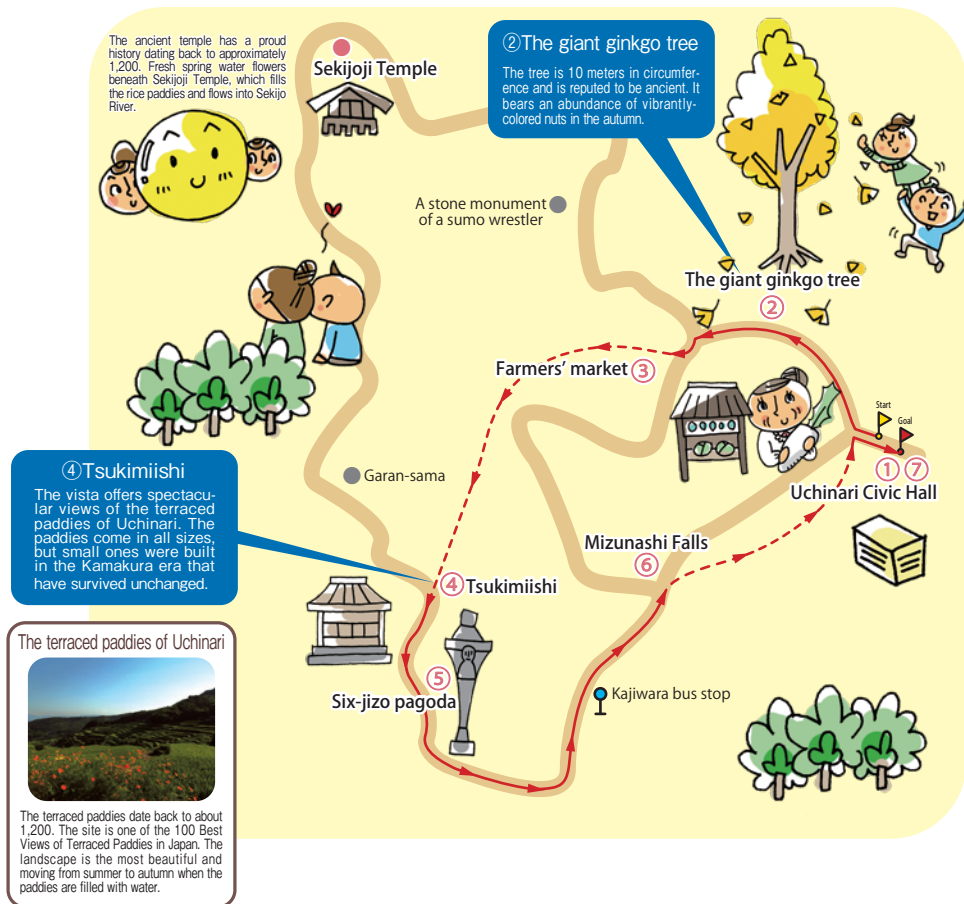


Course	①Hamada Onsen Museum → ②Hakkizuka → ③Toyasen → ④Saikoji Temple Rinzo → ⑤Karatsuya	Book Kamegawa Onsen Kame-kame Club TEL: 090-5742-7473 (Takahashi) ※Japanese only https://kamekame10.exblog.jp/ ※Guides are available in English, Chinese (Cantonese and Mandarin), and Korean by prior arrangement. ※Additional fee applies
When?	1st Sunday of the month	
Times	Start 10:10AM, finish 12:00PM.	
Meet-up	JA Beppu Hiji Kamegawa Ekimae branch	
Fee	1,000 yen *Includes a meal.	

※A different course is offered every month.

Outstanding view! Uchinari Rice Terraces Experience and Walking Tour

Would you like to experience rural life surrounded by 1,300 terraced paddies? At the end of the course, you get the unique chance of tasting the rice harvested from the Uchinari rice paddies.



Course	①Uchinari Civic Hall → ②The giant ginkgo tree → ③Farmers' market → ④Tsukimiishi → ⑤Six-jizo pagoda → ⑥Mizunashi Falls → ⑦Uchinari Civic Hall ※Offering experience programs and tour courses that let visitors fully enjoy Uchinari.	Book	TEL: 090-7923-7881 (Goto, Admin Office) ※Japanese only ※Guides are available in English, Chinese (Cantonese and Mandarin), and Korean by prior arrangement. ※Additional fee applies
When?	Experience session: 4th Sunday of June and October Exploration session: 4th Sunday of May, July, and September(Please call for details.)		
Times	10:00AM – 2:00PM		
Meet-up	9:30AM at Uchinari Community Center	Fee	Adults 1,500 yen Elementary school children 500 yen, free for pre-school children ※Includes experiences and lunch.

Go on a historical romance
trail of Kankaiji

Have a fun exploration of the famous historical sites in Kankaiji, including the location of the encampment of the Ohtomo troops during the Battle of Ishigakibaru, Kyushu's Battle of Sekigahara.



Course	①The site of Muneyuki Yoshihiro's encampment → ②A monument commemorating the Crown Prince's visit (Emperor Taisho) → ③Kankaiji Bridge → ④A monument commemorating the tree planting by the Emperor and Empress → ⑤Yakushido, Yakushiyu → ⑥Kankaiji Fukkosen → ⑦Seineizan kankaizen-ji Temple, the legend of Princess Shikishi, the tomb of Yoshizane Nijo, Keiyoku monument → ⑧Konpiragu Shrine → ⑨Inn & Restaurant Matsubaya	Book Kankaiji Historical Romance Walk 3, Kankaiji, Beppu City, Oita Prefecture. TEL: 0977-22-4271 (Restaurant & Inn Matsubaya) ※Japanese only ※Guides are available in English, Chinese (Cantonese and Mandarin), and Korean by prior arrangement. ※Additional fee applies
When?	1st Sunday of the month	
Times	Start 12:00PM, finish 3:00PM.	
Meet-up	Around Family Mart in front of Kankaiji Post Office	Fee Adults 700 yen (Complimentary tea and snack)

Group tours can be arranged by request.

Guides

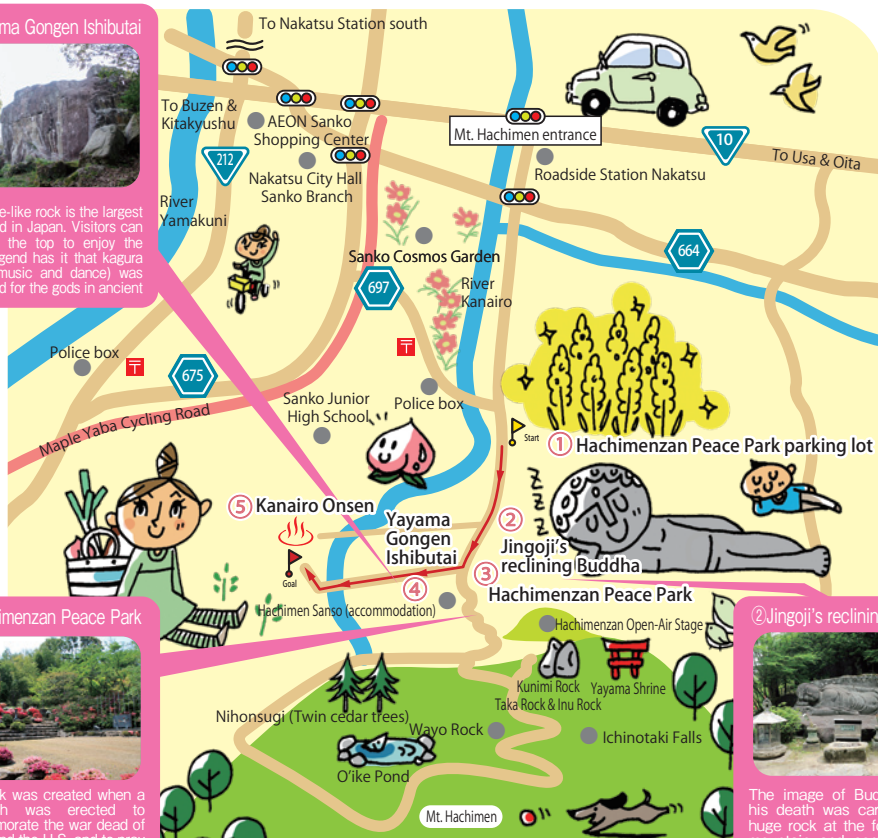
Nakatsu Yabakei Sightseeing
Guide (Sanko)Hachimenzan Peace Park
Route

The route takes visitors on a drive and walk to visit the reclining Buddha of Jingoji Temple and Yayama Gongen Ishibutai (a stage-like rock). You can also enjoy the open-air baths of Kanairo Onsen (hot spring spa). (Subject to change to the Cosmos Garden according to the season)

④ Yayama Gongen Ishibutai



The stage-like rock is the largest of its kind in Japan. Visitors can climb to the top to enjoy the view. Legend has it that kagura (Shinto music and dance) was performed for the gods in ancient



③ Hachimenzan Peace Park



The park was created when a cenotaph was erected to commemorate the war dead of Japan and the U.S. and to pray for world peace. A memorial service and a peace ceremony are held every May 3.

② Jingoji's reclining Buddha



The image of Buddha after his death was carved on a huge rock at the foot of the mountain and completed in 1970. At 7.88 meters long and 1.4 meters high, it is one of the largest in west Japan.

Course	①Hachimenzan Peace Park parking lot→②Jingoji's reclining Buddha→③Hachimenzan Peace Park→④Yayama Gongen Ishibutai→⑤ Kanairo Onsen (Subject to change to the Sanko Cosmos Garden according to season) *A guided tour (15 min) of the Hachimenzan Peace Park Museum is also available. Visit to Sanko Cosmos Park is only available during the season (mid-October to early November).	Book	Tourism Information Center, Nakatsu Yabakei Tourism Association. 219-2, Shimata, Nakatsu City, Oita Prefecture. (JR Nakatsu Station South Gate) TEL: 0979-23-4511 (Japanese only) FAX: 0979-64-6611 (Japanese only) E-mail: info@nakatsuyaba.com FAX and emails in English are available if you are willing to wait some time for a response. Book at least a week in advance by phone or from the website. *Required time: 2 hours by car and on foot. *The location of Sanko Cosmos Garden changes from year to year.
When?	All year (Apply at least 1 week in advance)		
Times	As per customer request.		
Meet-up	JR Nakatsu Station South Gate 219-2, Shimata, Nakatsu City, Oita Prefecture.		
Fee		Fee	[Tour guide fee] 2,000 yen per guide

Ao-no-Domon, Yabakei Bridge, Rakanji Bridge Course

Ao-no-Domon is a tunnel dug by a Buddhist monk named Zenkai over 30 years in the Edo period. Would you like to touch the chisel marks that remain? You can also enjoy the elegant Yabakei Bridge and Rakanji Bridge made of stone on foot.

④Yabakei Bridge (Oranda Bridge)



Commonly called Oranda Bridge, it is Japan's only 8-arch stone bridge. It is the longest in Japan at 116 meters. The beautiful bridge is in sympathy with the surrounding landscape and exudes a unique mood.

⑤Ao-no-Domon



Priest Zenkai spent 30 years to complete the tunnel using only a chisel and hammer. It is also mentioned in Kan Kikuchi's novel "Beyond Love and Hate."

②Rakanji Bridge



The stone bridge with a wide space between the columns has three graceful lotus arches. The construction was extremely difficult due to the flat arches and was completed in 1919 after two collapses. It is one of Japan's three longest bridges, the Yaba bridges.

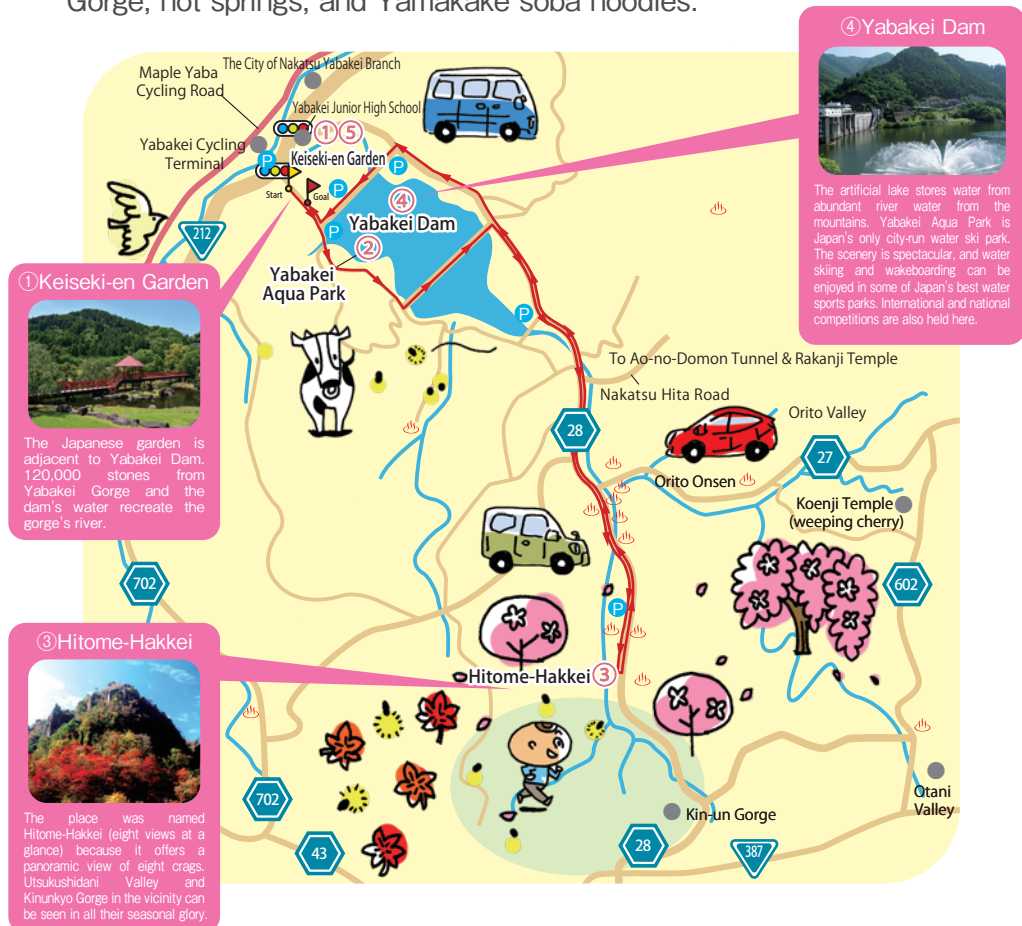


Course	①Ao-no-Domon public parking area → ②Rakanji Bridge → ③Berm → ④Yabakei Bridge (Oranda Bridge) → ⑤Ao-no-Domon → ⑥Ao-no-Domon public parking area	Book	<p>Tourism Information Center, Nakatsu Yabakei Tourism Association. 219-2, Shimata, Nakatsu City, Oita Prefecture. (JR Nakatsu Station South Gate) TEL: 0979-23-4511 (Japanese only) FAX: 0979-64-6611 (Japanese only) E-mail: info@nakatsuyaba.com FAX and emails in English are available if you are willing to wait some time for a response. Book at least a week in advance by phone or from the website. ※Duration: 2 hours on foot</p>
When?	All year (Apply at least 1 week in advance)		
Times	As per customer request.		
Meet-up	Ao-no-Domon public parking area Sogi, Yabakei-machi, Nakatsu City, Oita Prefecture.	Fee	[Tour guide fee] 2,000 yen per guide

Guides

Nakatsu Yabakei Sightseeing
Guide (Yabakei Gorge)Yabakei Dam - Keiseki-en
Garden - Shinyabakei Route

The recommended driving route includes the Keiseki-en Garden, which mirrors the nature of Yabakei Gorge, the nature of Shinyabakei Gorge, hot springs, and Yamakake soba noodles.



Course	①Keiseki-en Garden→②Yabakei Aqua Park→③Hitome-Hakkei→④Yabakei Dam→⑤Keiseki-en Garden	Book	Tourism Information Center, Nakatsu Yabakei Tourism Association. 219-2, Shimata, Nakatsu City, Oita Prefecture. (JR Nakatsu Station South Gate) TEL: 0979-23-4511 (Japanese only) FAX: 0979-64-6611 (Japanese only) E-mail: info@nakatsuyaba.com FAX and emails in English are available if you are willing to wait some time for a response. Book at least a week in advance by phone or from the website. *Required time: 2 hours by car
When?	All year (Apply at least 1 week in advance)		
Times	As per customer request.		
Meet-up	Yabakei Dam Memorial Park - Keiseki-en Garden Oshima, Yabakei-machi, Nakatsu City, Oita Prefecture.	Fee	[Tour guide fee] 2,000 yen per guide (Separate charges apply)

Okuyabakei Nature Walk
Route

The route includes the tomb of the first woman in Kyushu to donate her body for an autopsy and a series of canyons and pits created by the forces of nature. The Manyo-no-Kahi Monument Road en route is safe for children and the elderly to enjoy.

⑤ Sarutobi-Sentsubo Gorge



A series of potholes can be viewed at Sarutobi-Sentsubo Gorge. The potholes were formed when gravels accumulated in the hollows of rocks whirled around by the current and carved the rocks. Numerous potholes of all sizes spread out, and the area became a natural monument in 1935. The name Sarutobi derives from monkeys that used to jump between the rocks.

① Mabayashi Gorge

The valley stretches 1.5 km downstream from Sarutobi-Sentsubo Gorge. It was created by a series of giant potholes and is also called Yamakuni-no-Takachiho.



④ Man-yo Kahi Monument Road

A poetry competition has been held since 2000 as part of an initiative to "build a town perfumed with poetry," inviting the public to enter their Waka, Haiku, and Senryu poems, and monuments were erected to commemorate them.



Course	①Mabayashi Gorge→②The tomb of Toku Yamamoto→③Nenbutsu Bridge→④Man-yo Kahi Monument Road→⑤Sarutobi-Sentsubo Gorge	Book	Tourism Information Center, Nakatsu Yabakei Tourism Association. 219-2, Shimata, Nakatsu City, Oita Prefecture. (JR Nakatsu Station South Gate) TEL: 0979-23-4511 (Japanese only) FAX: 0979-64-6611 (Japanese only) E-mail: info@nakatsuyaba.com FAX and emails in English are available if you are willing to wait some time for a response. Book at least a week in advance by phone or from the website. *Required time: 2 hours on foot.
When?	All year (Apply at least 1 week in advance)		
Times	As per customer request.		
Meet-up	Mabayashi Gorge parking lot Kusamoto, Yamakuni-machi, Nakatsu City, Oita Prefecture.	Fee	[Tour guide fee] 2,000 yen per guide

A historical and literary exploration tour

Take a guided tour of the “historical and literary trail” chosen as one of the “100 famous Japanese roads” by the Ministry of Land, Infrastructure, Transport and Tourism.

Mt Shiroyama



A castle was built on the mountain in 1608 by Takamasa Mori, who had moved from Kuma Castle in Hita. It still retains the yagura turret in the Sanmaru (outer part of the castle) and stone walls at the top of the mountain. There is a hiking trail.

④Kyushintei



The tea room is on the site of a rice storehouse of Saiki Castle. Its name means “to serve tea means to understand the heart of the customer before serving.”

⑥Kunikida Doppo Museum



The home of Nagatoshi Sakamoto where Meiji's leading naturalist author Doppo Kunikida had rented a room while teaching in Saiki is now a museum.

⑧Yoken-ji Temple



The temple was built by Takamasa Mori in 1605 as the temple of the Mori family. The surviving main hall was constructed in 1934, and the priest's kitchen and living quarters in 1845.

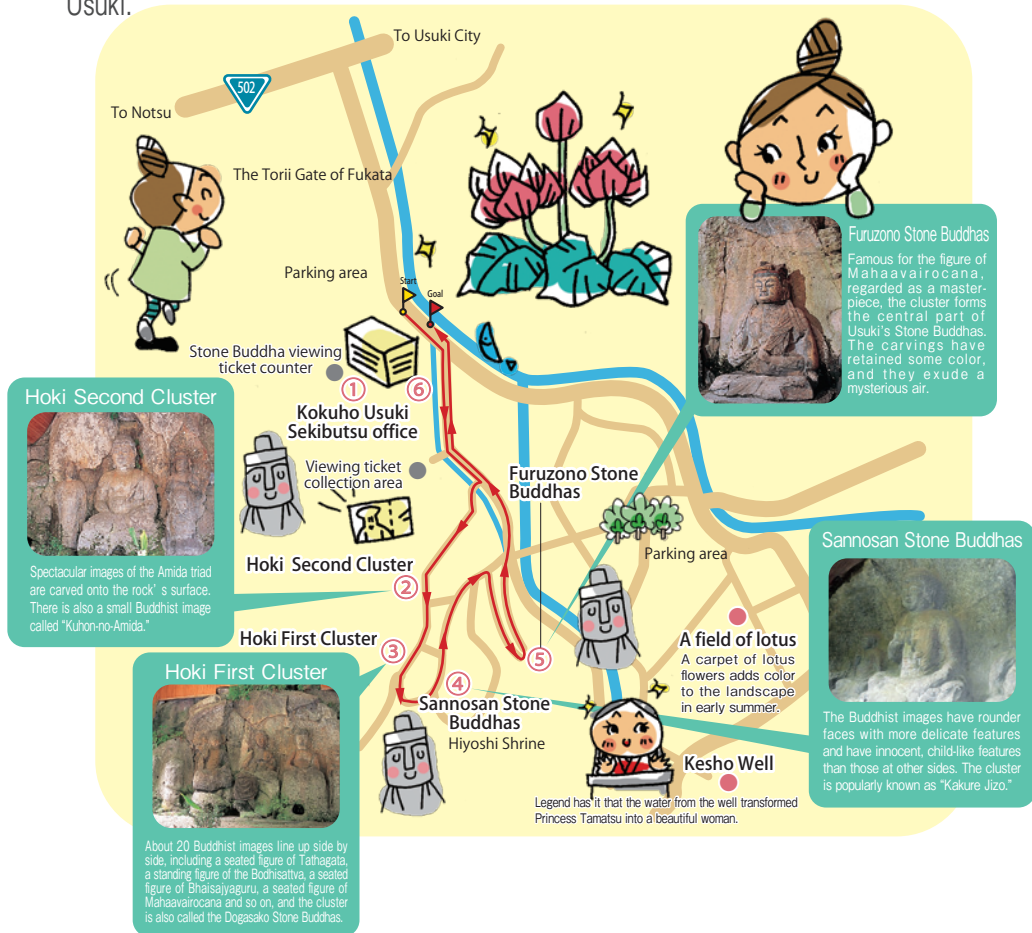


Course	①Saiki Cultural Center parking area (meet-up) → ②Yaguramon Gate → ③Yakuimon Gate → ④Kyushintei (Enjoy a cup of matcha) → ⑤Yamagiwa Shiseki Hiroba (Yamanaka manor) → ⑥Kunikida Doppo Museum → ⑦Nagayamon Gate → ⑧Yoken-ji Temple (part ways)	Book	Saiki City Tourism Association 1-1, Nakamura-Minami-machi, Saiki City, Oita Prefecture. TEL: 0972-23-1101 (Japanese only) 0972-28-5656 (Sat, Sun, and national holidays) *Japanese only FAX: 0972-23-1146 (Japanese only) e-mail: gxsta03@gmail.com Website: http://saiki-kankou.com Please book by phone at least one week in advance.
When?	As and when requested. (We may not be able to accommodate a booking due to guide training sessions, etc.)		
Times	As and when requested.		
Meet-up	Saiki Cultural Center parking area 1-2, Ohte-machi, Saiki City.	Fee	A group of 8 or more, 2,000-3,000 yen (Free for a group of 7 or less, excluding admission to Kunikida Doppo Museum and Kyushintei.)

There is also a guided bus tour for the Tsurumi area, Ohnyu Island tour, and Mt Shiroyama tour.

Tour of the national treasures, the Stone Buddhas of Usuki.

The national treasure Usuki Stone Buddhas with a 1,200-year history is a secret spiritual vortex. Tour the four clusters of Stone Buddhas while feeling the history of Usuki.



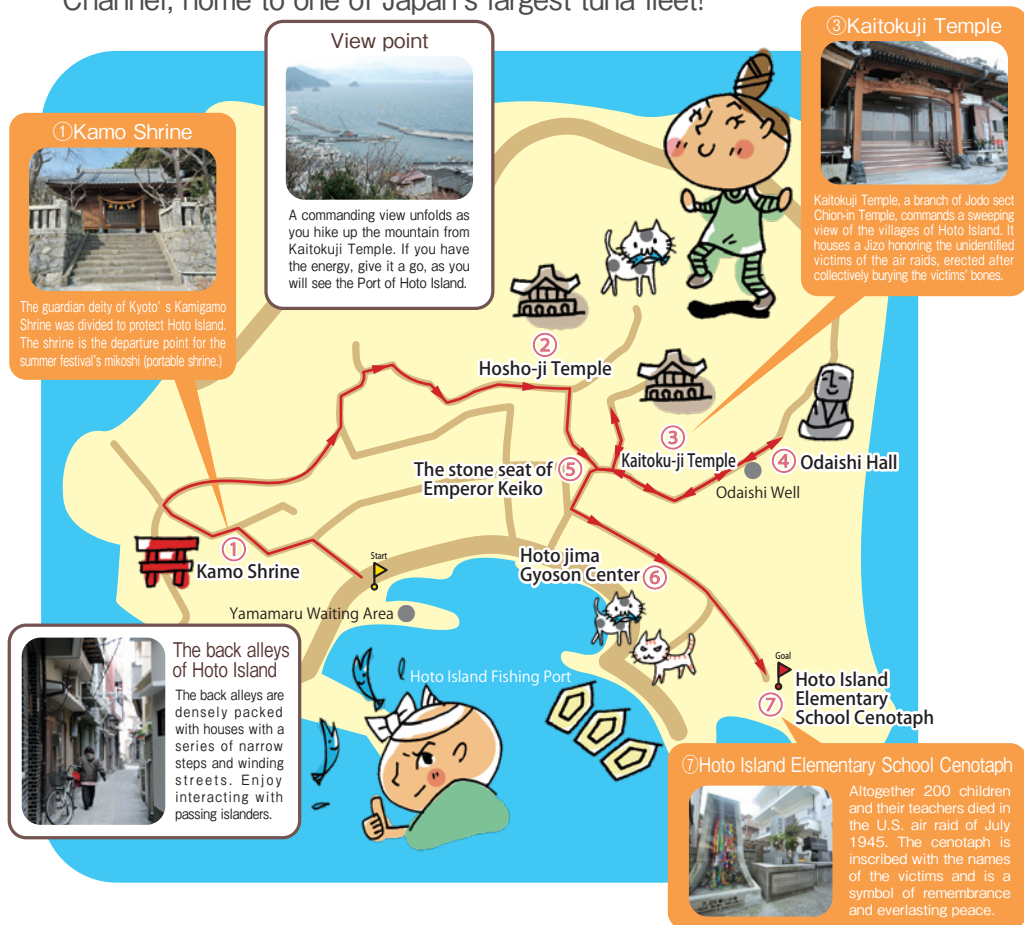
Course	①Kokuho Usuki Sekibutsu Office → ②Hoki Second Cluster → ③Hoki First Cluster → ④Sannosan Stone Buddhas → ⑤Furuzono Stone Buddhas → ⑥Kokuho Usuki Sekibutsu Office	Book	Usuki Sekibutsu Volunteer Guide no Kai Sekibutsu Office TEL: 0972-65-3300 (Japanese only)	
When?	As per customer request (must be booked at least three days in advance)			
Times	10:00AM to 3:00PM			
Meet-up	In front of the Stone Buddhas Tour ticket sales counter Kokuho Usuki Sekibutsu office, Fukata, Usuki City.	Fee	Free	

Guides

Tsukumi Kanko Volunteer no Kai
(Tsukumi Volunteer Tour Guides Association)

A walking tour of Hoto Island

Hoto, an island of romance that gives off the scent of the Black Current. Let's explore Hoto Island with the vibrant cerulean waters of Bungo Channel, home to one of Japan's largest tuna fleet!



Course	①Kamo Shrine → ②Hosho-ji Temple → ③Kaitoku-ji Temple → ④Odaishi Hall → ⑤The stone seat of Emperor Keiko → ⑥Hotojima Gyoson Center → ⑦ Hoto Island Elementary School Cenotaph	Book	Tsukumi Volunteer Tour Guides Association 20-15, Miyamoto-machi, Tsukumi City, Oita Prefecture. TEL: 0972-82-9542 (Japanese only) FAX: 0972-82-9520 (Japanese only) Please call to book at least two weeks in advance before the date of the tour.
When?	Throughout the year (except January to March) ※Due to an increased risk of cancellations as boats are involved.		
Times	Starting at 10:00AM or 1:00PM. Finishing at 11:40AM or 2:40PM.	Fee	2,000 yen per group ※Excludes boat fare and cost of lunch
Meet-up	In front of Yamamaru waiting area. Hoto Island, Tsukumi City.		

Customers will need to pay the round trip fare to and from Hoto Island. Be sure to wear comfortable attire as the tour involves a lot of hills.

Guides

Taketa City Volunteer
Tour Guides Committee

A path of discovering the castle town.

The ancient streets to meander, listening to the gentle sound of the flow of clear water.

Taketa City

③Hachimangawa Yokocho



Hachimangawa Yokocho is one of the few surviving alleys in the castle town. It is where the salt merchant's house stood in the Edo period.

⑪Hirose Shrine



Hirose Shrine is dedicated to Takeo Hirose who gained prominence for this humanity during the Russo-Japanese War.

⑩Christian Cave Chapel



The Cave Chapel is a historic site of the prefecture. The manmade cave chapel is a very rare example.

⑨Buke Yashiki Street



The old houses lined side by side and the sound of the water flowing through the gullies on Buke Yashiki Street add ambiance to the castle town.

⑧The Hall of Taketa City Historical Culture "Yugakukan"



Enjoy a historical tour as you visit the Oka Castle Guidance Center, which provides information on the ruins of Oka Castle, and take an elevator to the adjacent national historic site, the former residence of Chikuden and Gaseido (gallery).

⑥Rentaro Taki Memorial Museum



The museum is housed in part of the mansion where Rentaro had spent his boyhood. It also houses his musical scores.



Course	①Bungo-Taketa Station → ②Taketa Christian Museum → ③Hachimangawa Yokocho → ④Ikoi no hiroba (Juroku Rakan Stone Statues-mae) → ⑤Ho'onji Temple Sanmon Gate → ⑥ Rentaro Taki Memorial Museum → ⑦Taki RentaroTunnel → ⑧The Hall of Taketa City Historical Culture "Yugakukan" → ⑨Buke Yashiki Street → ⑩Christian Cave Chapel → ⑪Hirose Shrine	Taketa City Volunteer Tour Guides Committee 2335-1, Aiai, Taketa City, Oita Prefecture. (Inside Taketa Tourism Information Center) TEL: 0974-63-2638 (Japanese only) FAX: 0974-63-2861 (Japanese only)
When?	Throughout the year (except 12/29-1/3)	
Times	Starting at 10:00AM, finishing at 11:30AM.	
Meet-up	Bungo-Taketa Station	
Fee	3,000yen per guide.	

Guides

Showa-no-machi Guides
(Machizukuri K.K.)

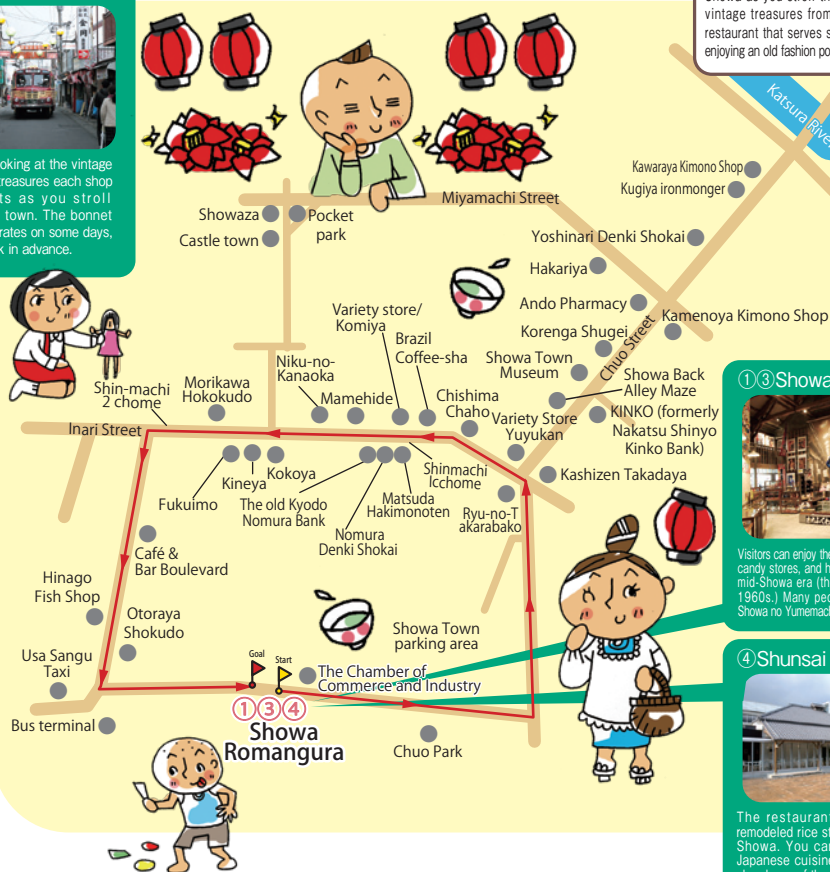
Visit the dear old town of the Showa era

Let's experience the Showa era at Showa Romangura after exploring the town with a unique guide.

② Showa Town



Enjoy looking at the vintage Showa treasures each shop exhibits as you stroll through town. The bonnet bus operates on some days, so check in advance.



① ③ Showa Romangura



Visitors can enjoy the toys, the mom-and-pop candy stores, and household goods of the mid-Showa era (the mid-1950s to early 1960s). Many people take pictures at Showa no Yumenachi Elementary School.

④ Shunsai Minamigura



The restaurant is housed in a remodeled rice storage built in early Showa. You can enjoy authentic Japanese cuisine prepared with an abundance of the fruits of the sea and mountains of the Kunisaki Peninsula.

Course	(Example) ① Showa Romangura → ② Explore Showa Town → ③ Showa Romangura (Mom and Pop's Museum of Dreams) → ④ Shunsai Minamigura (lunch); part ways.	Book	Bungo-Takada City Kanko Machizukuri Co.Ltd. 989-1, Shin-machi, Bungo-Takada City, Oita Prefecture. TEL: 0978-23-1860 FAX: 0978-23-1870 e-mail: info@showanomachi.com Website: https://www.showanomachi.com/
When?	As and when needed		
Times	As and when needed		
Meet-up	Showa Romangura 989-1, Shin-machi, Bungo-Takada City.	Fee	2,000 yen per guide (Not including admission fees for Romangura or lunch.)

* From a group of 5 or more * Book at least ten days in advance (they may not be able to accommodate your request.)

Cultural exploration course of Rokugo-manzan
(Mountain of Six Sanctuaries)

A local guide will take you on a tour of the cultural properties in the Tashibu district tailored to your needs, such as the Kumano Magaibutsu, Fukiji Temple, and Maki Ohdo Temple. Get to know Rokugo-manzan with a thousand-year-old history through a tour only a local guide can provide.

Tashibunoshō



Ancient literature has taught us that the area has retained the rural landscape of the Heian period and it was considered a highly important private estate of Usa Shrine, the head shrine of all Hachiman shrines in Japan. It has been designated as Japan's important cultural landscape and is also recognized as an area of Globally Important Agricultural Heritage Systems.

Maki Ohdo Temple



The temple houses nine Buddhist images that are regarded as masterpieces of the Heian period, including the seated figure of Amida Buddha and the four heavenly kings. All of them are designated as important cultural properties of Japan.

Fukiji Temple



The temple is the oldest surviving timber structure from the late Heian period in Kyushu and is a listed national treasure. It is one of the three most important Amida halls of Japan next to Uji Byodo-in Temple and Hiraizumi Chusonji Temple. The grounds exhibit impressive changing colors of the four seasons, such as fresh spring greenery and crimson foliage in the autumn.

Kumano Magaibutsu



The rock face is carved with Japan's largest Cetaka (8m) and Mahaavairocana (6.8m). They are believed to be from the Heian period and are designated as important cultural properties of Japan.



Course	Tashibu, including Kumano Magaibutsu, Fukiji Temple, and Maki Ohdo Temple.	Book	Bungo-Takada City Hall Commerce, Industry, and Tourism Section. 39-3, Korenaga-machi, Bungo-Takada City, Oita Prefecture. TEL: 0978-25-6219 (Japanese only) FAX: 0978-22-0955 (Japanese only) Call for a booking form by fax or post. Please book at least one week in advance. Website: https://www.showanomachi.com/
When?	As and when needed		
Times	As and when needed		
Meet-up	Parking area at the starting point or tourist information center.	Fee	Fukiji Temple, Maki Ohdo Temple, Tashibunoshō: 1,000 yen per place Kumano Magaibutsu: 2,000 yen, up to 4,000 yen.

Capacity: about 40 (Call for advice if the group has more than 40 people.)

Guides

Usa City Tourism Association
(Yokkaichi Densho Club)

Explore the streets of temple town, Yokkaichi.

The walking trail is about 1km. You will walk through the historic city where religion, politics, and trade integrated as you see Kyushu's largest timber structure, Tozai Betsuin, the satellite office of Hita Magistrate, and Sakuragaoka Shrine where a market opened on the dates of four.

⑥ Jinya (regional government office) Gate



The Jinya Gate is the only surviving relic of the regional government office of Yokkaichi City. A small stone monument inscribed "The Site of Yokkaichi Jinya" stands next to it.

⑦ Sakuragaoka Shrine



The shrine dates back to 1558 when the land steward and governor of Chikugo, Hikaru Watanabe, transferred the Ebisu shrine from his old residence. Hizen Kokukishigadake Castle. The shrine later relocated to Ichiya Manor and the market that was held before the gods gave birth to the name "Yokkaichi."

⑤ Yokomachi Street

Yokomachi Street is a 137-meter stretch of Edo-style cobbled street from the junction of Honmachi and Ebisu streets.

④ Higashi Honganji Temple Yokkaichi Branch

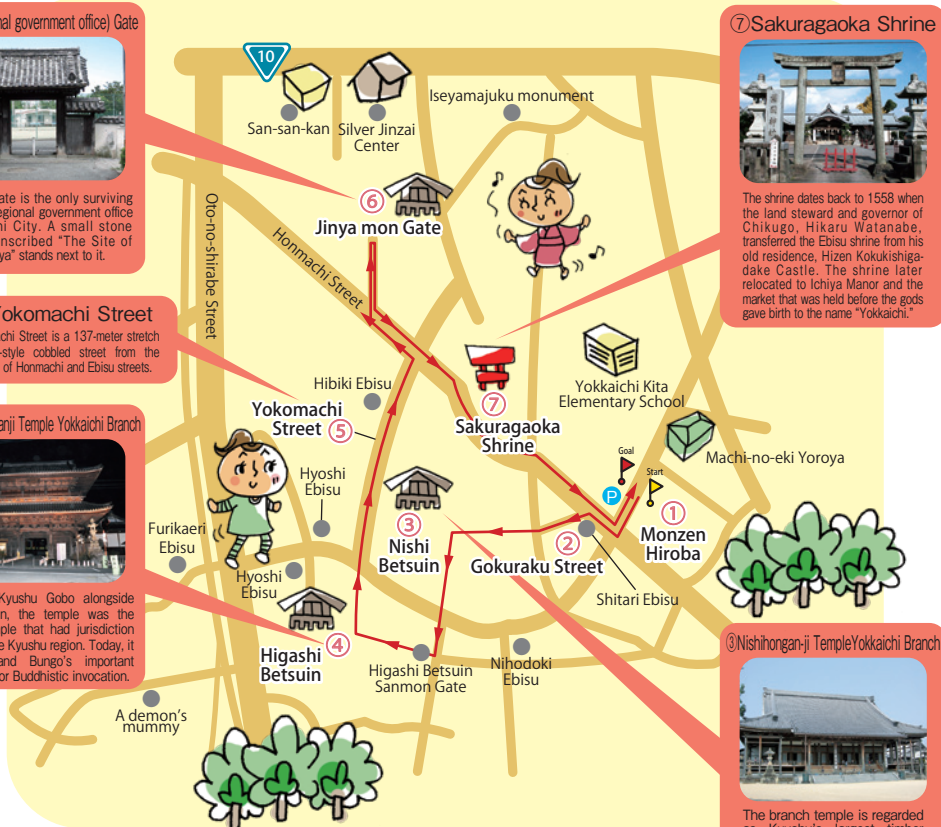


Called the Kyushu Gobo alongside Tozai Betsuin, the temple was the principal temple that had jurisdiction over the entire Kyushu region. Today, it is Buzen and Bungo's important training hall for Buddhistic invocation.

③ Nishihongan-ji Temple Yokkaichi Branch



The branch temple is regarded as Kyushu's largest timber structure and houses one of the best monasteries of Japan. It was built in 1747.

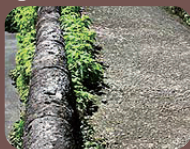


Course	As and when needed (must be booked at least two weeks in advance.)	Book	Usa City Tourism Association 2179-3, Minami-Usa, Usa City, Oita Prefecture. TEL: 0978-37-0202 (Japanese only) FAX: 0978-37-0601 (Japanese only) Website http://www.usa-kanko.jp Yokkaichi Densho Club Makino: 090-3666-1578 (Japanese only)
When?	Any (Reservation 2 weeks in advance)		
Times	Any time on request		
Meet-up	Yokkaichi Monzen Hiroba Kawanoue, Yokkaichi, Usa City.	Fee	200 yen per person (including a booklet)

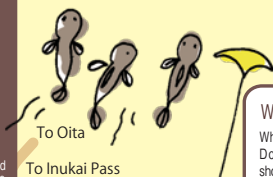
Explore the port town of Donko river and Sankinkotai detail.

See the town of Inukai where there were local government's buildings such as lodging houses, the magistrate's office, and storehouses, and the site of the Port of Inukai which was used during the Sankinkotai detail (a shogunate scheme requiring feudal lords to stay in their residences in Edo every other year.)

① Kamaboko rocks



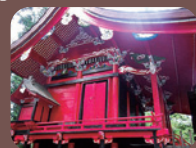
The rocks flank the road that leads to the old Port of Inukai, and they are shaped like kamaboko (fish cakes). It is believed that each stone had a pole inserted into the hole for holding up a cloth to hide the local feudal lord from view as he traveled through the area for his Sankinkotai detail.



What is a Sankinkotai Road?

When traveling to Edo from the Oka Domain to render services to the shogunate, the local feudal lord would hike over a mountain pass from Oka Castle's Shimohara Gate and travel to Inukai on foot. He would then take a boat from the Port of Inukai and go down Ono River to the Misa estuary, and then to the Sea of Setouchi.

④ Inukai Tenmansha Shrine



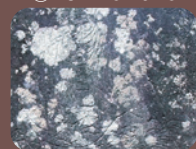
Built on a small hill with commanding views of the town of Inukai, the shrine has an eye-catching main hall painted in vibrant colors. The monument dedicated to Confucianist Kuso Mori on the shrine grounds has an inscription stating that the area had been a vast plum grove.

② The Port of Inukai



The Port of Inukai on Ono River was a key logistics center of the Oka Domain and prospered as the dock for the Sankinkotai detail in the Edo period. There are remnants of the cobble street at the dock that remind us of the bygone days. The famous Donkozur Competition and sweetfish fishing are also popular in the area.

③ Naminori Jizo



There are various theories as to why the jizo was made. One theory says that the Domain Lord Nakagawa had carved it to pray for safety as he set out to Funai for his Sankinkotai detail, and another says that the Sumi painter Sesshu had produced it when he had stopped by to paint the Chinda Falls in the town of Ohno.



The stone Buddhas of Inukai

Kenkofu Gorge

The scenic spot was named by Chikuden Tanomura.

The origins of the town of Inukai

Inukai developed as a port for transporting Oka Domain's personnel for the Sankinkotai detail and the domain's supplies. There were official buildings such as lodging houses, the magistrate's office, and storehouses, and the town was created by inviting merchants from outside the domain to relocate.

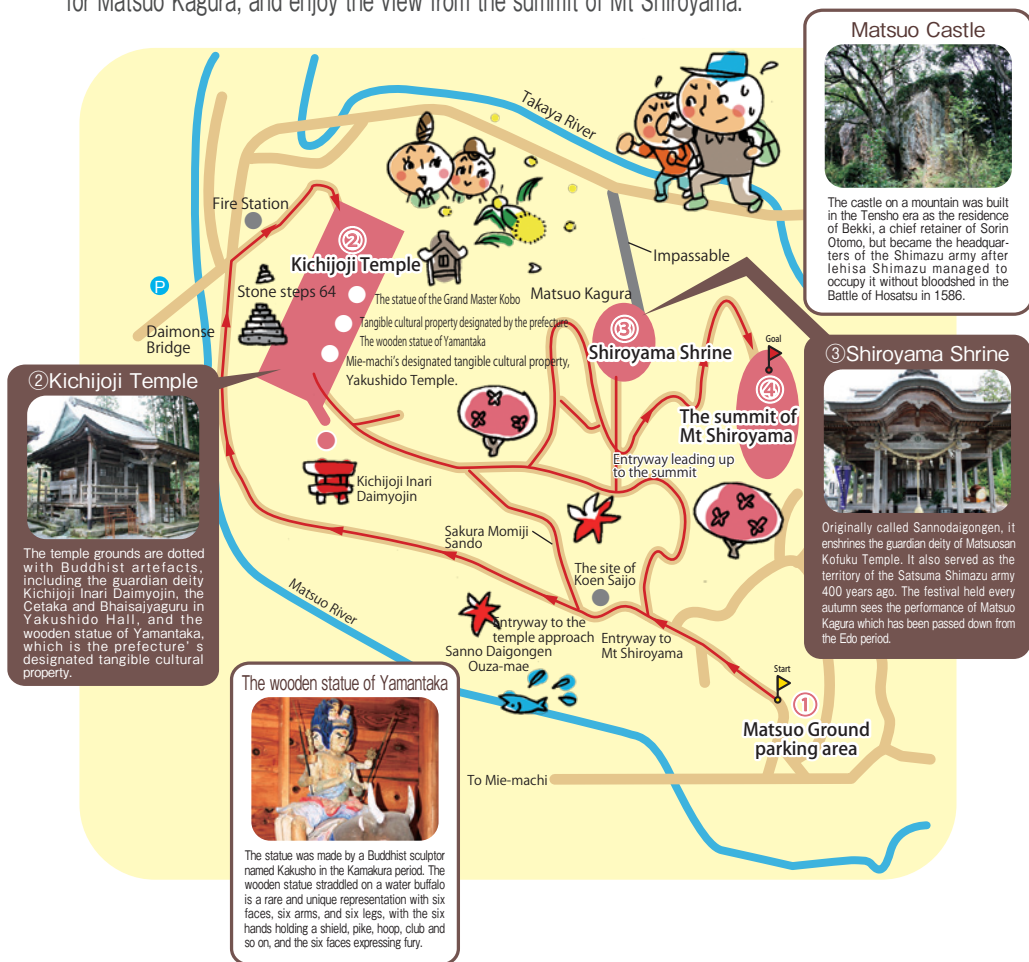
Course	Walk through the town of Inukai, see the historical sites associated with the Sankinkotai detail, and trek along the river inhabited by dark sleepers. ①Kamaboko rocks → ②The port of Inukai → ③Naminori Jizo → ④Inukai Tenmansha Shrine	Book	Tourism Bungo-Onno TEL: 0974-22-3706 (Japanese only) FAX: 050-3730-6057 (Japanese only)
When?	As and when needed		
Times	As and when needed		
Meet-up	Bungo-Ono City Hall Inukai Outstation Inukai, Inukai-machi, Bungo-Ono City, Oita Prefecture.	Fee	Call for details.

Please note that requests for dates and times may not be met as they are subject to the availability of the volunteer guides.

Guides

Council for the Promotion of
Tourism in ShiroyamaSee Kichijoji Temple and Shiroyama
Shrine famous for Matsuo Kagura

Tour Kichijoji Temple where many historical artefacts lay waiting, and Shiroyama Shrine famous for Matsuo Kagura, and enjoy the view from the summit of Mt Shiroyama.



Course	① Matsuo Ground parking area → ② Kichijoji Temple → ③ Shiroyama Shrine → ④ The summit of Mt Shiroyama	Book	Tourism Bungo-Onno TEL: 0974-22-3706 (Japanese only) FAX: 050-3730-6057 (Japanese only)
When?	As and when needed		
Times	As and when needed		
Meet-up	Matsuo Ground parking area Matsuo, Mie-machi, Bungo-Ono City, Oita Prefecture.	Fee	Call for details.

Please note that requests for dates and times may not be met as they are subject to the availability of the volunteer guides.

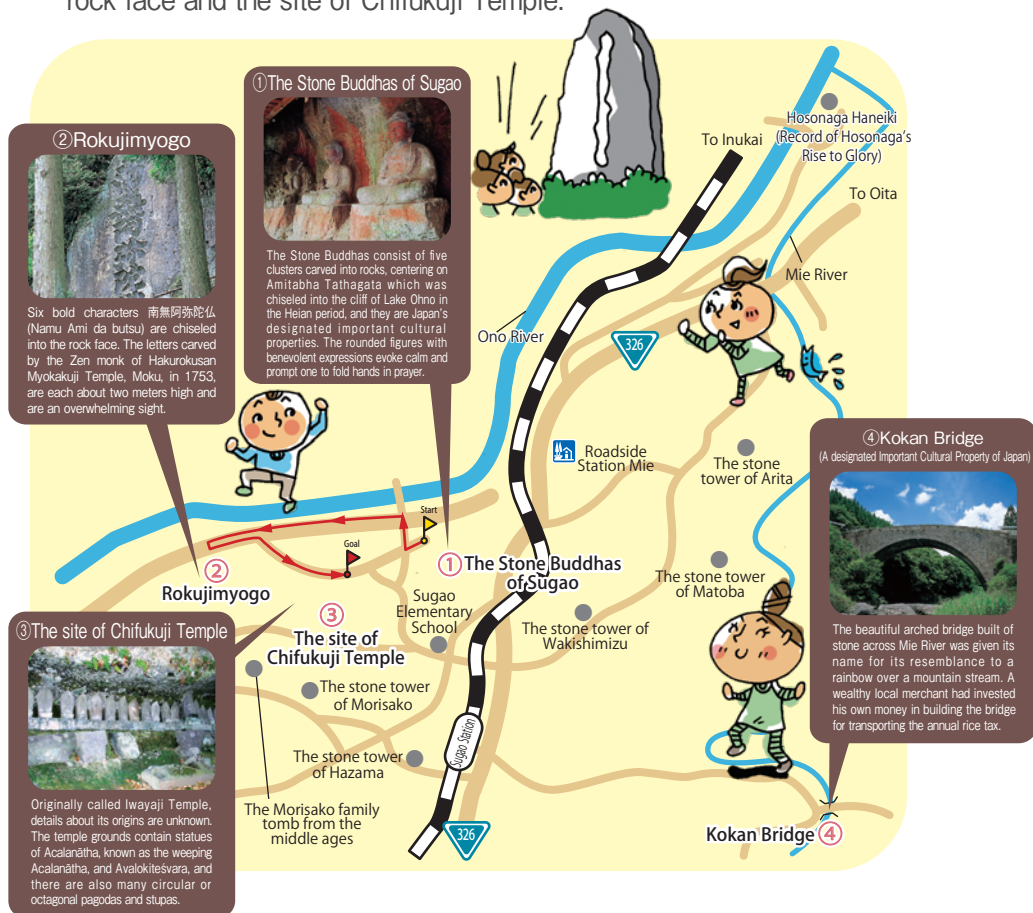
Guides

Sugao Sekibutsu-wo-
mamoru-kai

See the Stone Buddhas of Sugao and Rokujimyogo in a region steeped in the culture of stone carving.

Bungo-Ono City

Go on a walking trail to see the Stone Buddhas of Sugao, Rokujimyogo inscribed "Namu Ami da butsu" on a 12-meter high Buddha carved into the rock face and the site of Chifukuji Temple.



Course	①The Stone Buddhas of Sugao → ②Rokujimyogo → ③The site of Chifuku-ji Temple → (④Kokan Bridge: by request.)	Book	Tourism Bungo-Onno TEL: 0974-22-3706 (Japanese only) FAX: 050-3730-6057 (Japanese only)
When?	As and when needed		
Times	As and when needed		
Meet-up	Sugao Sekibutsu parking area Sugo, Mie-machi, Bungo-Ono City, Oita Prefecture.	Fee	Call for details.

Please note that requests for dates and times may not be met as they are subject to the availability of the volunteer guides.

Guides

Akai Yane no Sato

Experience life in the country at schoolhouse with a red roof.

Get the taste of country living as you observe nature on a trekking trail, try char-grilling, roast sweet potatoes, inoculate logs with shiitake spawns, and cook rice in bamboo.



Course	The trekking course around the small timber schoolhouse with a red roof.	Book	Akai Yane no Sato Office TEL: 090-3079-7806 (Takano) ※Japanese only
When?	As and when needed		
Times	As and when needed		
Meet-up	Schoolhouse with a Red Roof Matsuo, Mie-machi, Bungo-Ono City, Oita Prefecture.	Fee	Call for details.

Please note that requests for dates and times may not be met as they are subject to the availability of the volunteer guides.

See a stone bridge, a waterwheel, and Harajiri Falls.

Tour the historical sites associated with the region's traditions and culture, and Saburo Koreyoshi Ogata, as you walk among the landscape that boasts the Harajiri Falls, a waterwheel, and irrigation channels.

Harajiri Falls



The horseshoe-shaped falls is 120 meters wide and 20 meters high and is powerful enough to be regarded as the "Niagra Falls of the East." (One of Japan's 100 Best Waterfalls.)

⑤ The Stone Buddhas of Miyazako



The Stone Buddhas of Miyazako consist of the Miyazako-Nishi Stone Buddhas across the valley and the Miyazako-Higashi Stone Buddhas.

Tulip Festa (April)



400,000 colorful, 100 species of tulips bloom riotously.



Ogata irrigation channels



The irrigation channels which began excavation 360 years ago helped build the foundations of Ogata 5,000 koku. (Selected as one of 100 Best Canals by the Ministry of Agriculture, Forestry and Fisheries in 2005.)

Who was Saburo Koreyoshi Ogata?

He was the chief of the Bungo samurais that appear in the Tale of the Heike. It is believed that he had built Oka Castle in Taketa to welcome Yoshitsune Minamoto. There is a site of Koreyoshi' s manor in the city.

③ Rigaku-no-Sato Densho Taikan



Don't miss on learning about the history of the region's traditional arts such as Kagura and Haguma, and the silk dolls that re-enact the lives of the people in the olden days!

Course	①Roadside Station Harajiri-no-Taki → ②The site of Saburo Koreyoshi Ogata's manor → ③Rigaku-no-Sato Densho Taikan → ④The town blacksmith → ⑤Miyazako Stone Buddhas → ⑥Roadside station Harajiri-no-Taki	Book	Tourism Bungo-Ono TEL: 0974-22-3706 (Japanese only) FAX: 050-3730-6057 (Japanese only)
When?	As and when needed		
Times	As and when needed		
Meet-up	Roadside Station Harajiri-no-Taki Harajiri, Ogata-machi, Bungo-Ono City, Oita Prefecture.	Fee	Call for details.

Please note that requests for dates and times may not be met as they are subject to the availability of the volunteer guides.

Guides

Asaji Yuhokai

Explore an ancient garden and the town of fine art

Enjoy the rural scenery as you visit the expansive Yujaku Park with gorgeous autumnal foliage, trek the country lanes, and see the Fumio Asakura Museum of Sculpture.

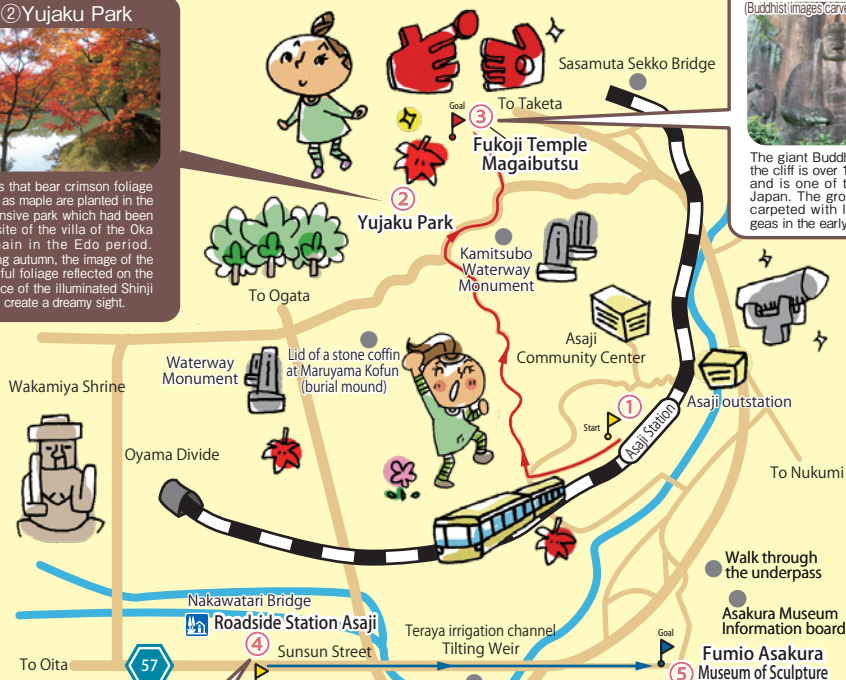
②Yujaku Park



Trees that bear crimson foliage such as maple are planted in the expansive park which had been the site of the villa of the Oka Domain in the Edo period. During autumn, the image of the colorful foliage reflected on the surface of the illuminated Shinji Pond create a dreamy sight.

③Fukoji Temple Magaibutsu
(Buddhist images carved into the rock face)

The giant Buddha carved into the cliff is over 11 meters high and is one of the largest in Japan. The ground becomes carpeted with lovely hydrangeas in the early summer.



④Roadside Station Asaji

Asaji's Bungo beef, popular for its melt-in-your-mouth texture, local specialties such as shiitake and sweet potatoes, wood crafts, and pottery are sold in the main building with a woody aroma, made of cedar logs sourced within the prefecture.



Seibu School Lunch Kitchen

⑤Fumio Asakura Museum of Sculpture

The museum in the hometown of sculptor Fumio Asakura and exhibits about 60 pieces of work by the artist from his student days to sunset years, including his pieces of resistance such as "Cemetery Keeper," "Izumi," and "Bashful." The park contains the white-blossomed plum trees Asakura adored, and visitors can appreciate the expansive garden throughout the seasons.

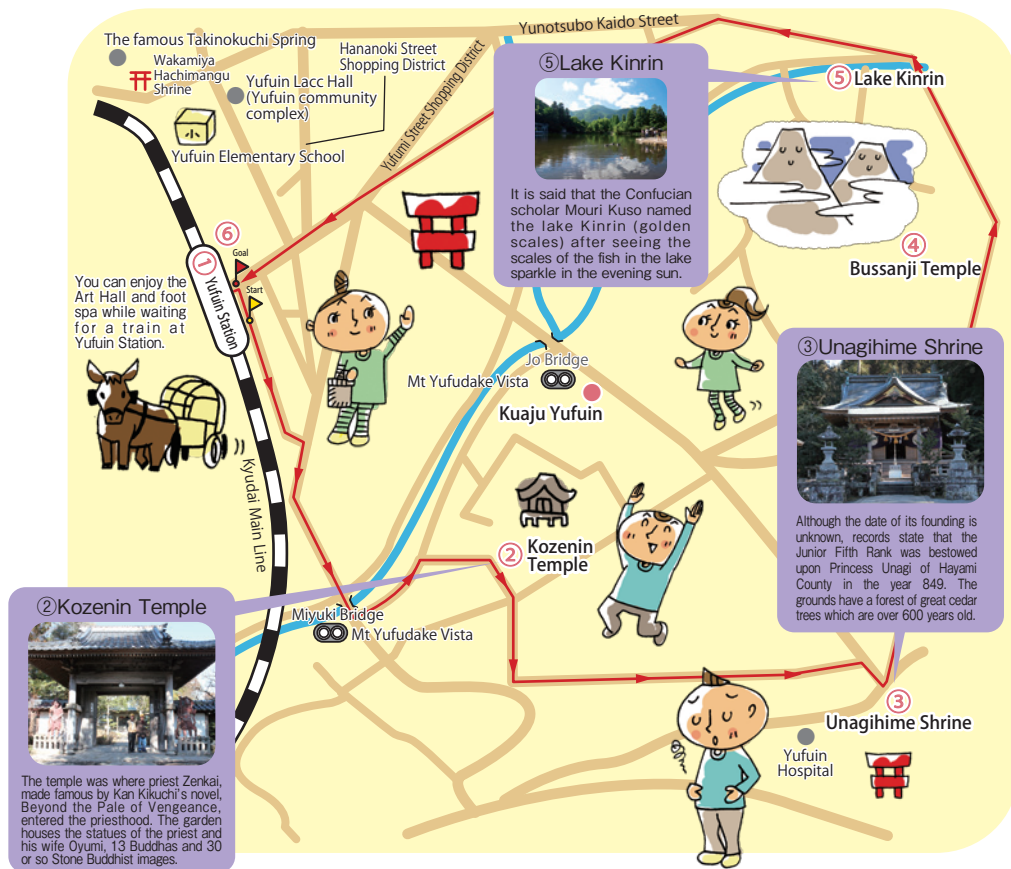


Course	A ①Asaji Station→②Yujaku Park → ③Fukoiji Temple Magaibutsu	Book	Tourism Bungo-Onno TEL: 0974-22-3706 (Japanese only) FAX: 050-3730-6057 (Japanese only)
	B ④Roadside Station Asaji→ ⑤ Fumio Asakura Museum of Sculpture		
When?	As and when needed	Fee	Call for details.
Times	As and when needed		
Meet-up	A JR Asaji Station, Tsuhoizumi, Asaji-machi, Bungo-Onno, Oita Prefecture	Fee	Call for details.
	B Roadside Station Asaji, Itazako, Asaji-machi, Bungo-Onno, Oita Prefecture		

Please note that requests for dates and times may not be met as they are subject to the availability of the volunteer guides.

A walking tour of Lake Kirin and Unagi
Hime Shrine, the origin of Yufuin.

Visit the temple of priest Zenkai who dug the Blue Tunnel in Yabakei Gorge and the shrine dedicated to the deity who founded Yufuin.



Course	①JR Yufuin Station → ②Kozenin Temple → ③Unagihime Shrine → ④Bussanji Temple → ⑤Lake Kinrin → ⑥JR Yufuin Station	Book	Yufuin Guide Asagiri Association (Hajikata) 94-35, Kawaminami, Yufuin-cho, Yufu City, Oita Prefecture. Mobile: 090-1878-2980 (Japanese only) ※Tour guide booking form submission (by fax)
When?	As and when needed (Must be booked at least two days in advance.)		
Times	Starting at 10:00AM, finishing at 11:30AM.		
Meet-up	JR Yufuin Station 8-2, Kawakita, Yufuin-cho, Yufu City, Oita Prefecture.	Fee	1,000 yen for a group of up to 5 people, 2,000 yen for up to 10, and an additional 1,000 for every five people.

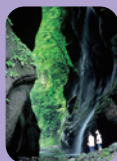
The tour will be conducted if there are more than two people in the group. ☆The guided tour operator can arrange for an interpreter. (Fees apply.)

Guides

Hasama-machi Volunteer Guides
Furusato Kenkyukai (Study Group)

Experience the mysterious beauty of Yufugawa Gorge and Hasama's history.

See the temples and shrines associated with the Hasama family and the remains of canals to be protected and passed down to future generations.



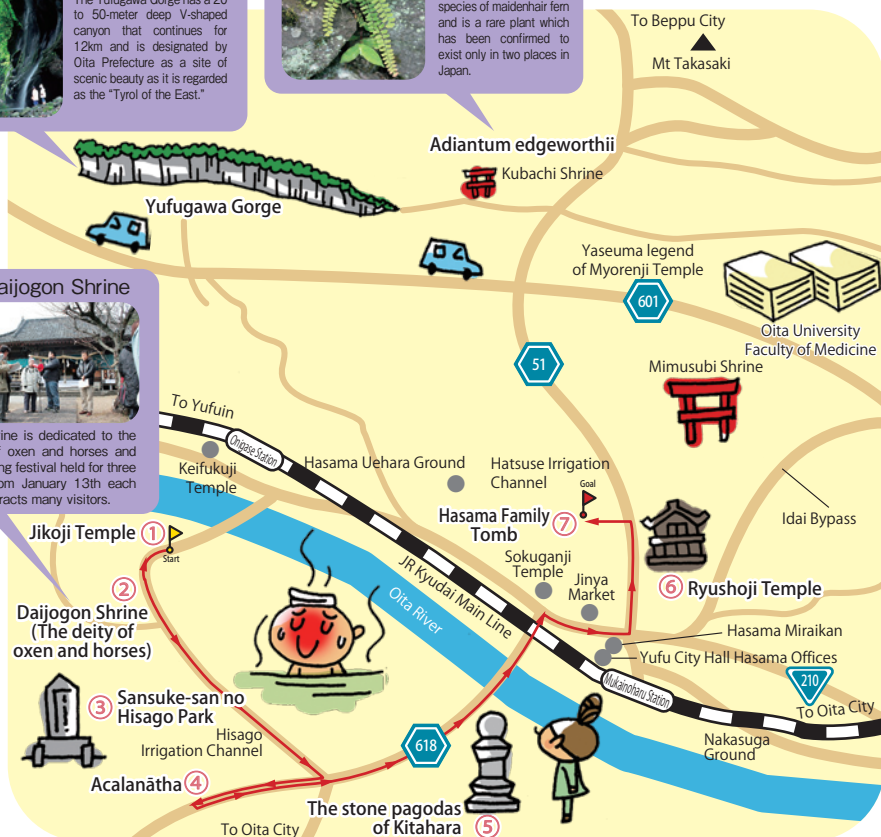
Yufugawa Gorge

The Yufugawa Gorge has a 20 to 50-meter deep V-shaped canyon that continues for 12km and is designated by Oita Prefecture as a site of scenic beauty as it is regarded as the "Tyrol of the East."



Adiantum edgeworthii

Adiantum edgeworthii is a species of maidenhair fern and is a rare plant which has been confirmed to exist only in two places in Japan.



②Daijogon Shrine



The shrine is dedicated to the deity of oxen and horses and the spring festival held for three days from January 13th each year attracts many visitors.

Jikoji Temple

Daijogon Shrine
(The deity of oxen and horses)



③ Sansuke-san no Hisago Park

Hisago Irrigation Channel

Acalanatha

The stone pagodas of Kitahara

Course	①Jikoji Temple → ②Daijogon Shrine → ③ Sansuke-san no Hisago Park → ④Acalanatha → ⑤The Stone Pagodas of Kitahara → ⑥Ryushoji Temple → ⑦The Hasama Family Tomb	Book	Hasama-machi Volunteer Guides Furusato Kenkyukai Mukainoharu, Hasama-machi, Yufu City, Oita Prefecture. Yoko Yoshida TEL: 097-583-4316 (Japanese only) Shuji Ninomiya TEL: 090-4580-1594 (Japanese only) E-mail: eno-nis@tic.bbiq.jp	
When?	March – November			
Times	As per customer request.			
Meet-up	In front of Yufu City Hall Hasama Office 128-1, Mukainoharu, Hasama-machi, Yufu City.	Fee	Free	

Tour the spiritual power vortexes that bring good fortune

The Kaiun Road Tomikuji / Takarakuji Kigan - Tomikuji Tosen Mairi is a walking trail approximately 3km long, named after a street that is supposed to bring wealth and the lucky place-name.

⑤ Tomiku Shrine
It is believed that touching the ball on which the foo dog, a rare example in Japan, stands would bring fertility and family prosperity and fulfil prayers. It is thought to have a great effect on boosting one's luck in lotteries.

④ Mankoji Temple
The family temple of Tadashige Tomiku, the lord of Tomiku Castle. Rumor has it that if you place a losing lottery ticket on the "Nemmu monument" and offer a prayer, you will win the next lottery.

③ Negai Bridge / Kanai Bridge
Crossing the bridge while making a wish is said to make your wish come true.

② Money-ki Neko Park
Try your luck here first. Insert a stone in the hole of the Money-ki-Neko statue to get your fortunes read.

① Tomiku Kaiun Bridge
The unique bridge is in the shape of a treasure ship. Stand on the bridge and feel like one of the seven gods of good fortune.

Port of Tomiku
The port prospered with maritime trade in the olden days. Kunisaki silver scabbard fish and Kunisaki Hime octopus are harvested at the port.

Tomiku Castle Ruins
The castle was built in 1261. It was besieged in an attack by an army led by Josui Kuroda. Musashi Miyamoto joined the Kuroda Cavalries in the battle and is said to have had his leg pierced by a spear as he tried to climb over a wall.

Monjusenji Temple
The temple is known as one of the three Monju temples in Japan. Drinking the "Water of Wisdom" gushing from the rocks is said to make you intelligent.

Kaiun Tomikuji Souvenir Shop
The shop is packed with fortune-bringing merchandise and lucky charms.
TEL: 0976-74-1199
(Saturdays, Sundays, and holidays only)

Wareishi Jizo-son

10km Kaiun Road

To Bungo-Takata City

Course	①Tomiku Kaiun Bridge → ②Money-ki Neko Park → ③Negai Bridge/Kanai Bridge → ④Mankoji Temple → ⑤Tomiku Shrine	Book	Tomiku Yonarekai Office 854-2, Tomiku, Kunisaki-machi, Kunisaki City, Oita Prefecture. TEL: 090-4984-2894 (Tabuki) ※Japanese only
When?	As and when needed (Must be booked at least one week in advance.)		
Times	As and when needed.		
Meet-up	Tomiku Kaiun Bridge Tomiku, Kunisaki-machi, Kunisaki City.	Fee	3,000 yen (1,000 yen per spot)

Guides

Shima-no-Kaze

Stroll through Himeshima Island
with a chief Shinto priest

Explore the village with an illustrated map from the Meiji era in hand and enjoy the unchanged and changed sceneries as you imagine what Himeshima must have been like in the olden days.

The seven mysteries of Himeshima Island



Himeshima regarded as an island of legends has many oral traditions associated with a princess which have been handed down as the seven mysteries of Himeshima. (Amida oysters, Ukisu, Shoshimizu, Sennindo, Kanetsuke stone, Ukita, Sakasayanagi)



⑦Kaiganji Temple

A sect of Chionjin Temple in Kyoto. It houses a bell tower and an image of the ten underworld kings.

⑧Ebisu Shrine

The god of fishermen is enshrined through the length and breadth of Japan. The shrine has a particularly large altar.

③Daruma Bridge

What used to be a bridge is now a road, but the area had a canal running through in the Edo period where boats traveled under the arched Daruma Bridge.

①Ohtarashi Hachiman Shrine

Built in the same Hachiman style as main shrine of Usa Jingu. 18 deities are enshrined in the grounds. The shrine used to be a place where the Kitsuki Domain lords came to pray for safe childbirth.

Himeshima Bon Dance



Traditional dances that have been passed down in the region include the fox dance which involves local children in distinctive fox makeup perform a funny dance, Ase, Zeni Daiko, and Sarumandayu.

Course	①Ohtarashi Hachiman Shrine → ②The old village office site → ③Daruma Bridge → ④Row of pine trees → ⑤Ohshiyama, The second-generation post office, The third-generation post office → ⑥The site of Nakaya → ⑦Kaiganji Temple → ⑧Ebisu Shrine → ⑨The old red brick warehouse of Senbaisho → ⑩Tiger prawn farm → ⑪The fourth-generation post office → ⑫Traffic lights → ⑬Nursery school (formerly an elementary school) → ⑭Port	Book Shimanokaze Himeshima Village, Higashi Kunisaki District. TEL/FAX: 0978-87-2844 (Japanese only) Souvenior shop Be Born
When?	Weekdays	
Times	①9:30AM-12:00PM ②2:30PM-5:00PM	
Meet-up	Ohtarashi Hachiman Shrine 2064, Himeshima Village	Fee ①2,500 yen (including lunch) ②1,000 yen (no lunch)

43

Guides

Kokonoë no Shizen wo
Mamoru-kai

Tadewara Wetlands Nature Observation Event

Take a slow stroll through Tadewara marshlands and a forest trail

Tadewara Marshland

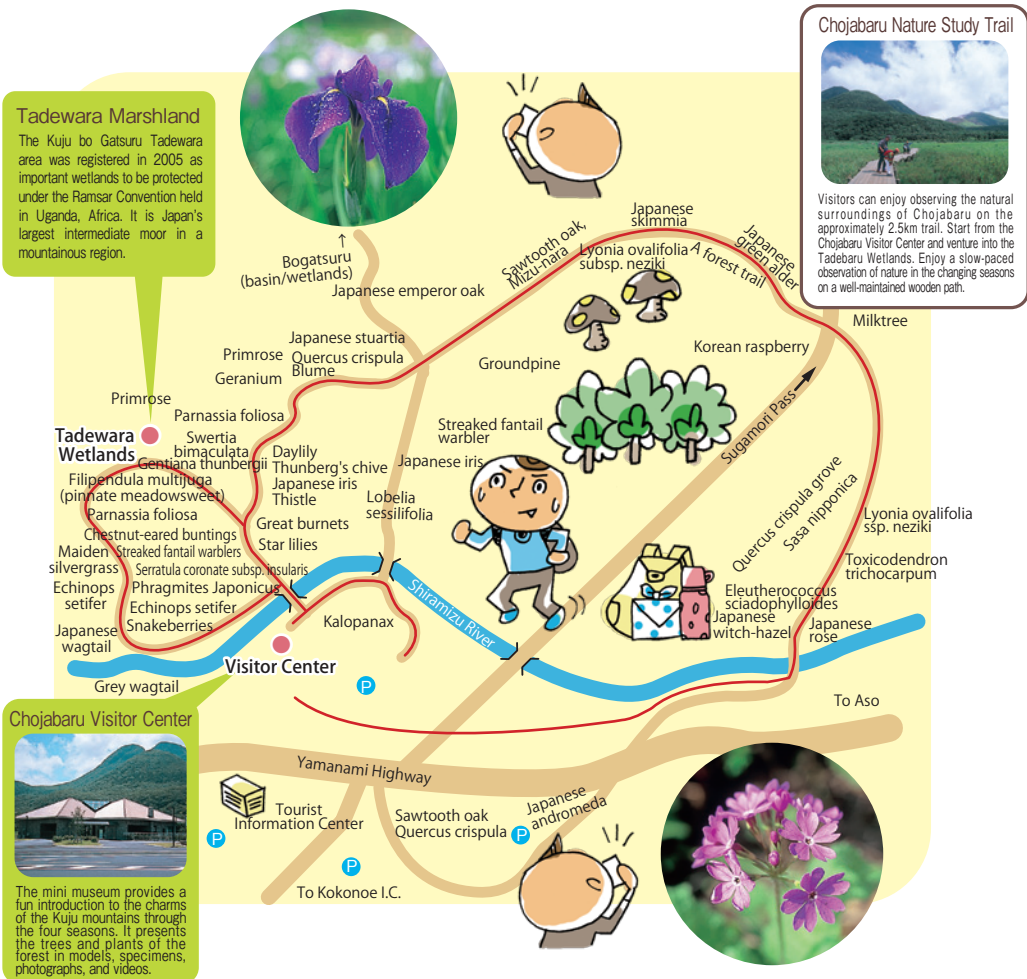
The Kuju Bo Gatsuru Tadewara area was registered in 2005 as important wetlands to be protected under the Ramsar Convention held in Uganda, Africa. It is Japan's largest intermediate moor in a mountainous region.



Chojabaru Nature Study Trail



Visitors can enjoy observing the natural surroundings of Chojabaru on the approximately 2.5km trail. Start from the Chojabaru Visitor Center and venture into the Tadewara Wetlands. Enjoy a slow-paced observation of nature in the changing seasons on a well-maintained wooden path.



Course	Tadewara Wetlands Trail, approx. 2.5 km	Book	Chojabaru Visitor Center 255-33, Tano, Kokonoë Town, Kusu District, Oita Prefecture. TEL/FAX: 0973-79-2154 Website: https://kujufanclub.com ※ On-the-day application is accepted. (Groups and foreign language guides require prior arrangement.) (Call the Chojabaru Visitor Center)
When?	Every Sunday and national holidays (1st & 3rd Sunday in Dec, 2nd & 4th Sunday in Jan and Feb, national holidays)	Fee	Free
Times	Start 10:00AM (Approx. 2 hrs.)		
Meet-up	Chojabaru Visitor Center		

Guided walk in mountains

Enjoy the experience according to your wishes.

Mt Waita



The 1,499-meter high conical mountain is in the northwestern edge of the Kuju mountain range. It is also called "Kusu Fuji" and "Oguni Fuji" for its resemblance to Mt Fuji.

Mt Waita



Makinoto



The view of Mt Mimata from Chojabaru

Mt Waita

Yutsubo Onsen

Handa Highlands
Kokonoe TownUkenokuchi
Onsen
magoso Onsen

Chojabaru

Mt Shimosensui

Kanno Jigoku Onsen

Chojabaru Visitor Center

Tadewara Wetlands

Chojabaru Onsen

Yufu City

Shiramizu mineral springs

Mt Kurotake

Mt Hi'ijidake

sujiyu Onsen

Mt Sensui

Kuju Onsen

Hossho Onsen

Maki-no-To

Hot springs entrance

Mt Mimata

Hokkein Onsen

Mt Daisen

Mt Hitome

Mt Goto

Mt Ryoshidake

Mt Kutsukake

Mt Nakadake

Ogigahana

Mt Kuju

Mt Inaboshi

Akagawa Onsen

Kuju Kogen Road Park

Senomoto
Highlands

The view of Mt Kuju from Ogigahana

Highland therapy

Relax your body and mind in the shade after trekking slowly through the wetlands and woodlands with a therapy guide. The trek is for two to six people. (Available from April to October.)

A trek on the ridgeline from Mt Kuroiwa to Sensui

(Makinoto Pass - Mt Kuroiwa - Kamisensui - Shimosensui - Chojabaru)

The trek on the ridge line from Mt Kuroiwa to Sensui provides a 360-degree view of Mt Ryoshidake, Mt Waita, Mt Mimata, and Hossho.

Trekking at the foot of Mt Kuju Mimata

(Tadewara Marsh - Amagaikae Pond - Bogatsuru - Kitaserri - Sugamori Pass - Chojabaru)

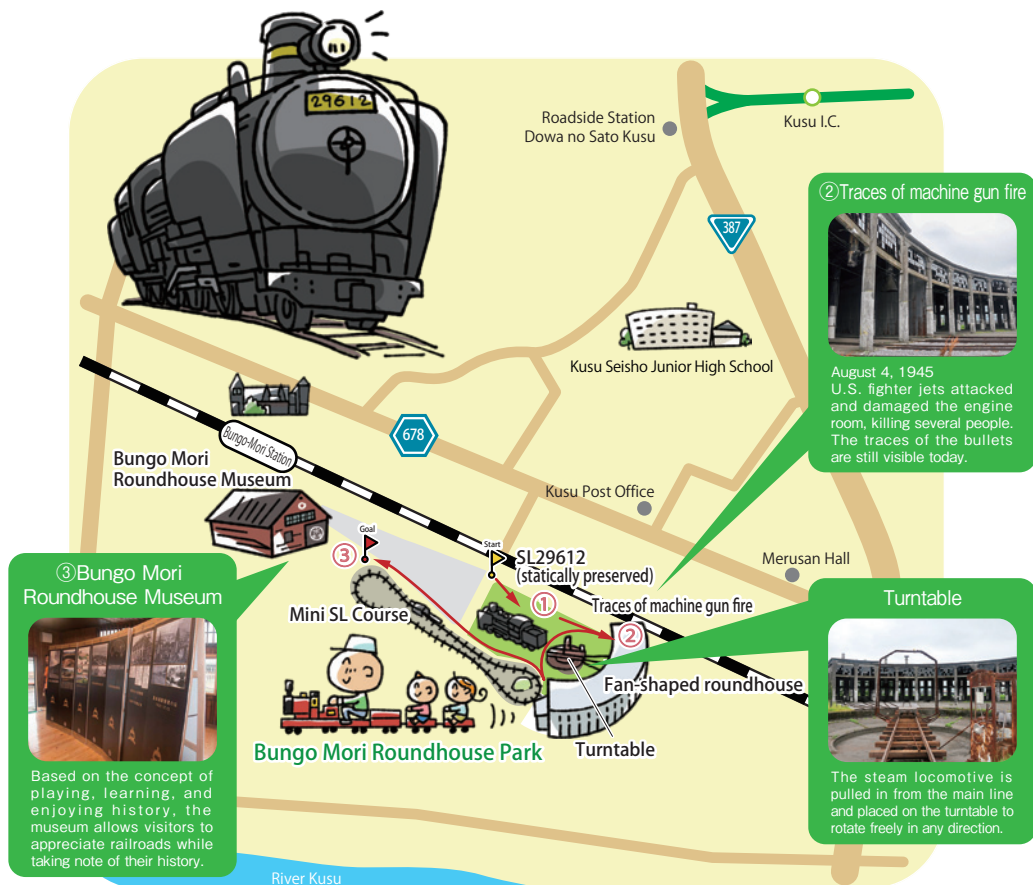
Trek the foot of Mt Kuju Mimata with a nature guide. Enjoy the walk while observing nature and learning about Kuju in general.

Course	Choose from a variety of courses	Book	Kuju Nature Guides Club TEL:090-9564-7140 (Keiji Masuda) ※Japanese only e-mail:experience@kuju-ngc.com https://kuju-ngc.com (for inquiry)
When?	As and when needed. (Must be booked at least two weeks in advance.)		
Times	As and when needed.		
Meet-up	Chojabaru or Makinoto Pass	Fee	The fee varies by distance and the number of participants.

Guides

Kusumachi Tourism Association
Town GuideHeritage of Industrial Modernization
Bungo Mori Roundhouse Park Course

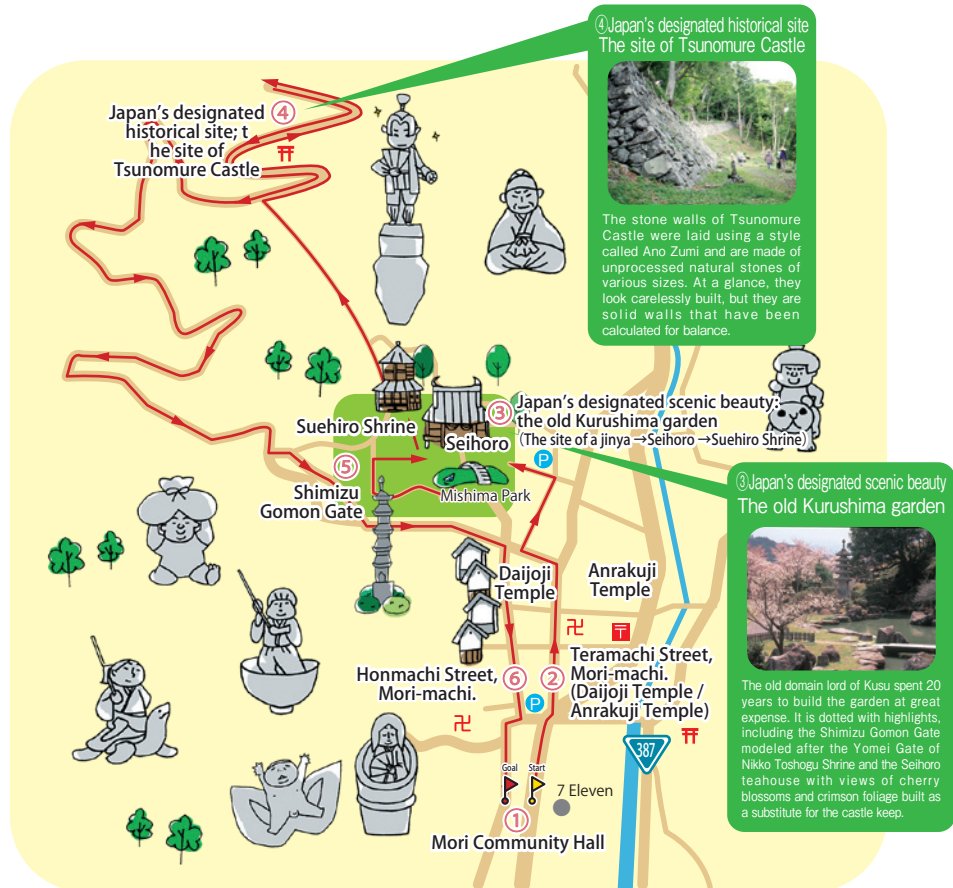
The Kyudai Main Line connects Kurume and Oita. The roundhouse is the only surviving fan-shaped train depot in Kyushu. The park's popular attractions include a mini train ride and plastic sheet craft-making in the museum.



Course	① SL29612 → ② Traces of machine gun fire → ③ Bungo Mori Roundhouse Museum	Book	Town Guide 246-13, Hoashi, Kusu TEL・FAX: 0973-72-1313 e-mail: info@kusumachi.jp Website: http://kusumachi.jp
When?	As and when needed		
Times	As and when needed		
Meet-up	Bungo Mori Roundhouse Park parking lot		
		Fee	2,000 yen per group

A relaxing walking course in the government-designated scenic area

The course will satisfy the mind, body, and soul as it includes the site of Tsunomure Castle with high stone walls from the Shokuho period and the old Kurushima family garden built by a domain lord who was now permitted to own a castle.



Course	①Mori Community Hall → ②Teramachi Street, Mori-machi.(Daijoji Temple/ Anrakuji Temple) → ③Japan's designated scenic beauty: the old Kurushima garden (the site of a jinya) → Seihoro → Suehiro Shrine → ④Japan's designated historical site: the site of Tsunomure Castle → ⑤Shimizu Gomon Gate → ⑥ Honmachi Street, Mori-machi → ①Mori Community Hall (3-hour course)	Book	Kusu Town Tourism Association 246-13, Hoashi, Kusu Town, Kusu District. TEL: 0973-72-1313 FAX: 0973-72-1373 e-mail: info@kusumachi.jp Website http://kusumachi.jp/
When?	As and when needed		
Times	As and when needed		
Meet-up	Mori Community Hall 32-2, Mori, Kusu Town, Kusu District.	Fee	Free (3,000 yen per group if a tour guide is required.) Admission to Seihoro is 2,000 yen per group.



Oita Prefecture Furusato Guide Liaison Council Office



Tourism Oita
3F, OASIS Hiroba 21, 2-50, Takasago-machi, Oita City.
TEL 097-536-6250 / FAX 097-536-6251
<https://www.visit-oita.jp/furusatoguide/>

Tourism Oita

Search

